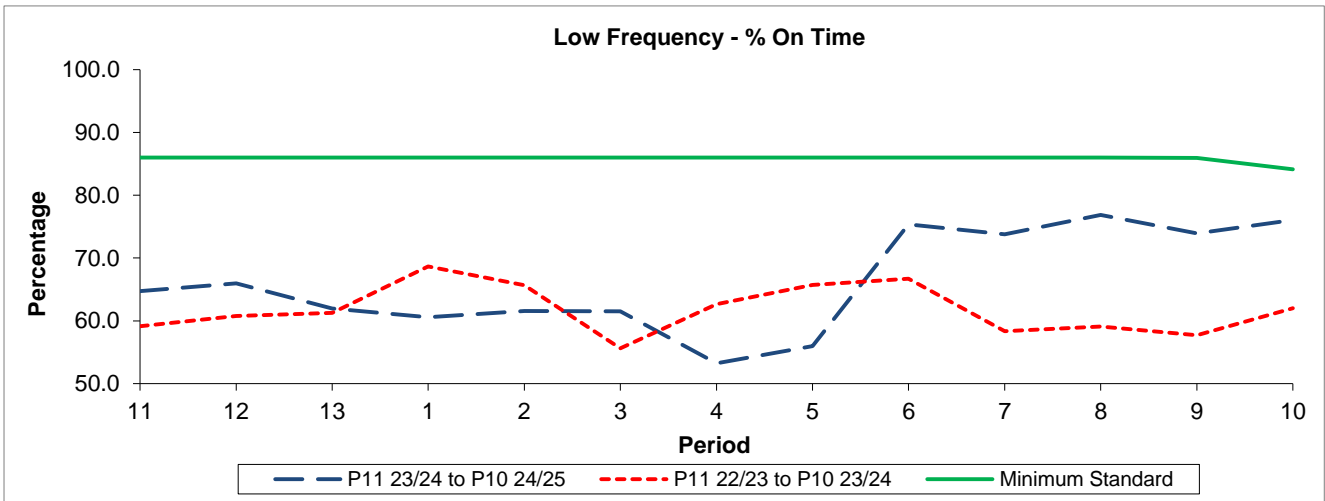


QSI & Mileage Performance Results

# Route 299

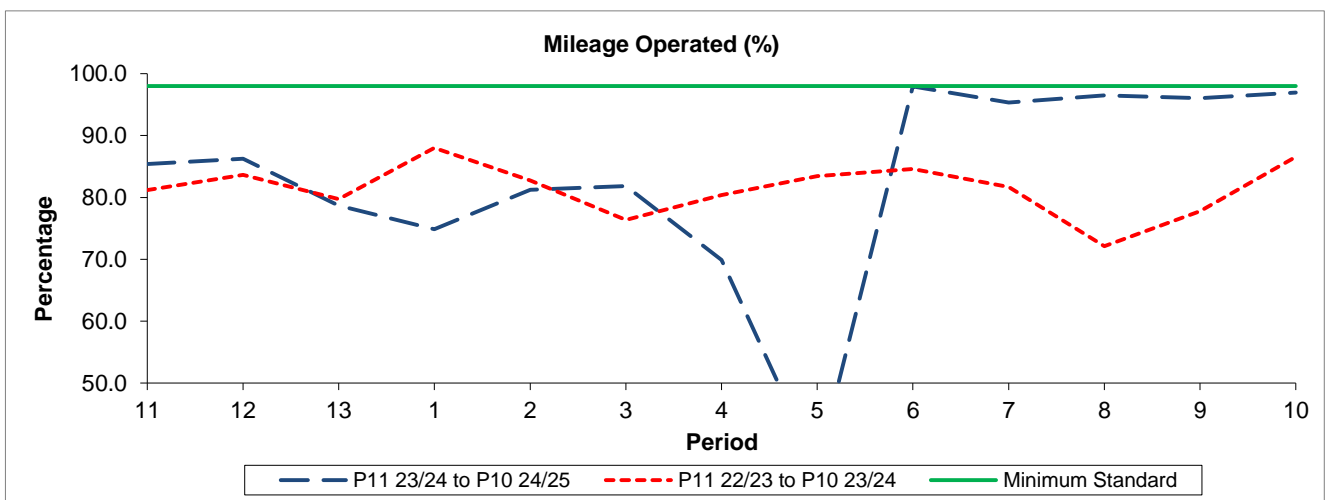
## Reliability Performance



Period	11	12	13	1	2	3	4	5	6	7	8	9	10
P11 23/24 to P10 24/25	64.73	65.97	61.96	60.60	61.55	61.54	53.24	55.96	75.38	73.79	76.86	73.91	76.04
P11 22/23 to P10 23/24	59.15	60.78	61.25	68.66	65.66	55.62	62.65	65.70	66.69	58.36	59.09	57.70	62.03
Minimum Standard	86.00	86.00	86.00	86.00	86.00	86.00	86.00	86.00	86.00	86.00	86.00	85.92	84.13

% On Time performance figures are based on four weeks data

## Mileage Performance



Period	11	12	13	1	2	3	4	5	6	7	8	9	10
P11 23/24 to P10 24/25	85.41	86.26	78.67	74.84	81.22	81.84	69.90	36.28	97.93	95.31	96.47	96.02	96.94
P11 22/23 to P10 23/24	81.20	83.66	79.71	88.00	82.73	76.35	80.37	83.44	84.58	81.70	72.12	77.78	86.54
Minimum Standard	98.00	98.00	98.00	98.00	98.00	98.00	98.00	98.00	98.00	98.00	98.00	98.00	98.00

Mileage Performance figures are based on four weeks data