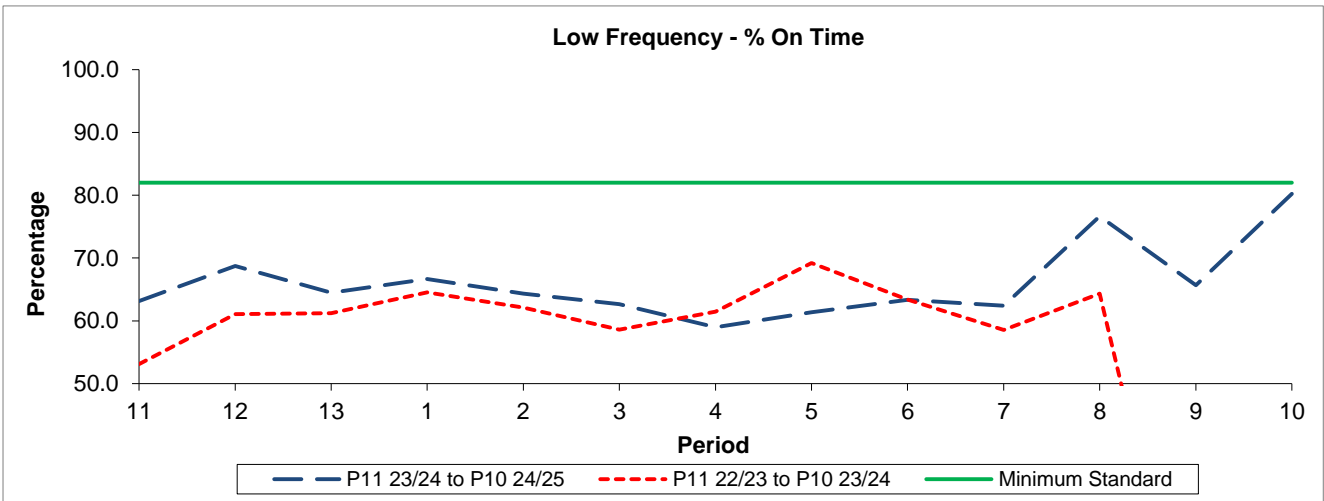


QSI & Mileage Performance Results

Route 298

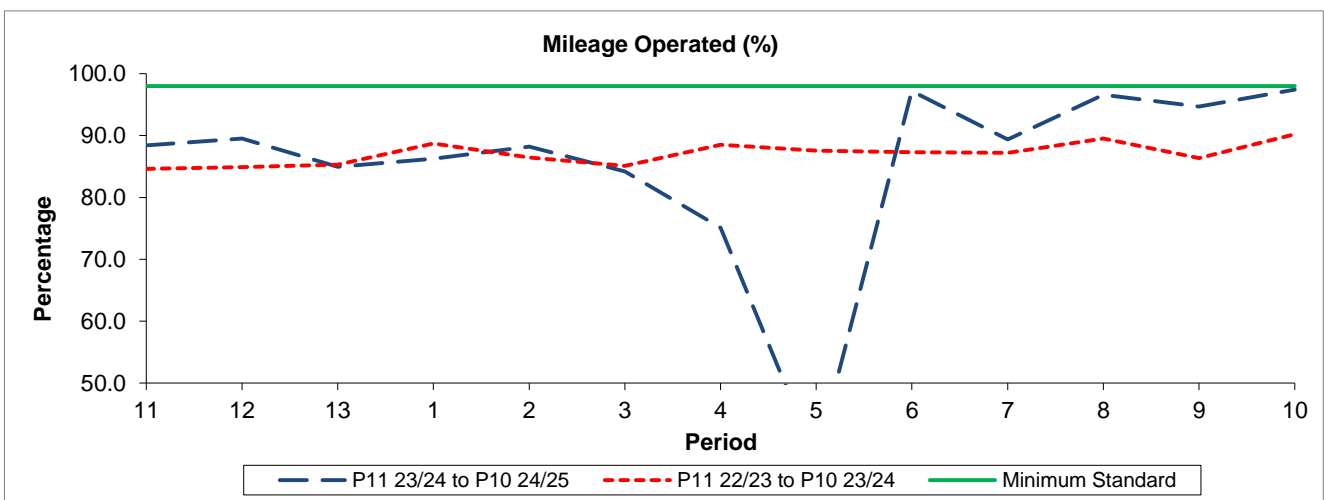
Reliability Performance



Period	11	12	13	1	2	3	4	5	6	7	8	9	10
P11 23/24 to P10 24/25	63.16	68.72	64.48	66.64	64.34	62.63	58.98	61.38	63.35	62.41	76.62	65.67	80.22
P11 22/23 to P10 23/24	53.09	61.08	61.20	64.53	62.10	58.59	61.47	69.20	63.39	58.54	64.32	-	-
Minimum Standard	82.00	82.00	82.00	82.00	82.00	82.00	82.00	82.00	82.00	82.00	82.00	82.00	82.00

% On Time performance figures are based on four weeks data

Mileage Performance



Period	11	12	13	1	2	3	4	5	6	7	8	9	10
P11 23/24 to P10 24/25	88.39	89.51	84.92	86.23	88.22	84.21	75.09	37.67	97.17	89.34	96.61	94.66	97.42
P11 22/23 to P10 23/24	84.61	84.92	85.32	88.73	86.44	85.08	88.51	87.56	87.31	87.21	89.53	86.37	90.21
Minimum Standard	98.00	98.00	98.00	98.00	98.00	98.00	98.00	98.00	98.00	98.00	98.00	98.00	98.00

Mileage Performance figures are based on four weeks data