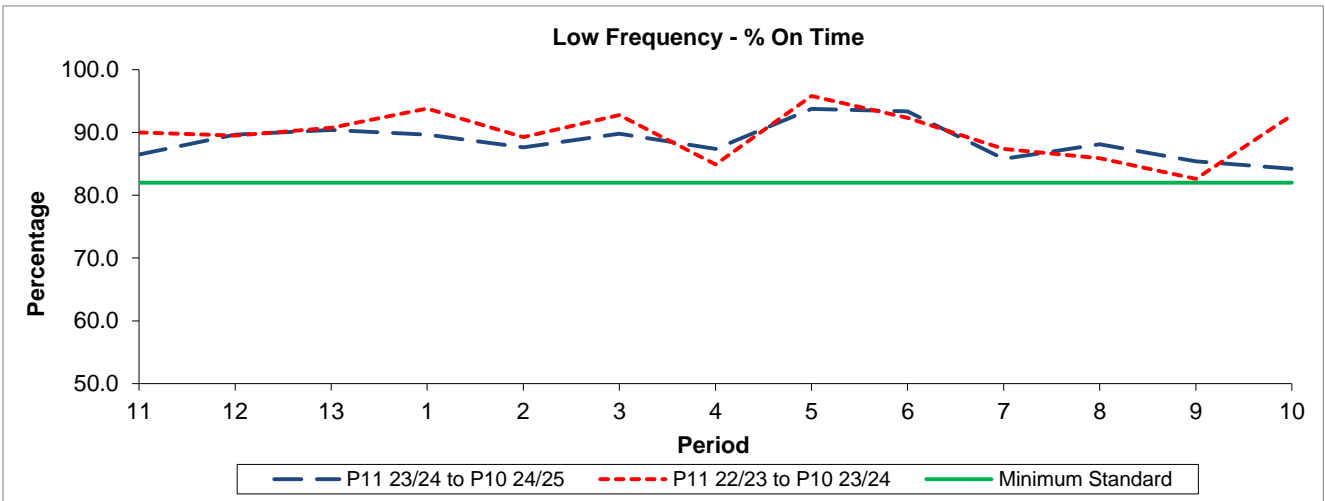


QSI & Mileage Performance Results

Route 296

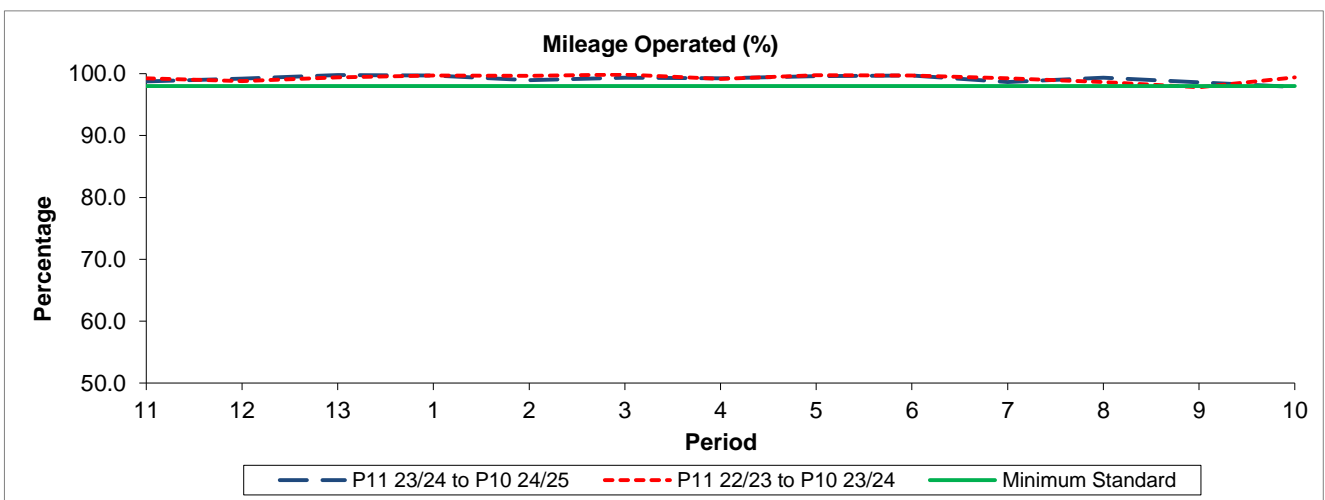
Reliability Performance



Period	11	12	13	1	2	3	4	5	6	7	8	9	10
P11 23/24 to P10 24/25	86.50	89.64	90.39	89.67	87.60	89.80	87.36	93.75	93.37	85.79	88.14	85.38	84.21
P11 22/23 to P10 23/24	89.98	89.51	90.75	93.80	89.27	92.78	84.92	95.80	92.33	87.39	85.91	82.61	92.70
Minimum Standard	82.00	82.00	82.00	82.00	82.00	82.00	82.00	82.00	82.00	82.00	82.00	82.00	82.00

% On Time performance figures are based on four weeks data

Mileage Performance



Period	11	12	13	1	2	3	4	5	6	7	8	9	10
P11 23/24 to P10 24/25	98.77	99.20	99.78	99.72	98.96	99.36	99.27	99.61	99.71	98.67	99.33	98.60	97.85
P11 22/23 to P10 23/24	99.25	98.82	99.38	99.68	99.65	99.86	99.13	99.73	99.68	99.23	98.64	97.81	99.40
Minimum Standard	98.00	98.00	98.00	98.00	98.00	98.00	98.00	98.00	98.00	98.00	98.00	98.00	98.00

Mileage Performance figures are based on four weeks data