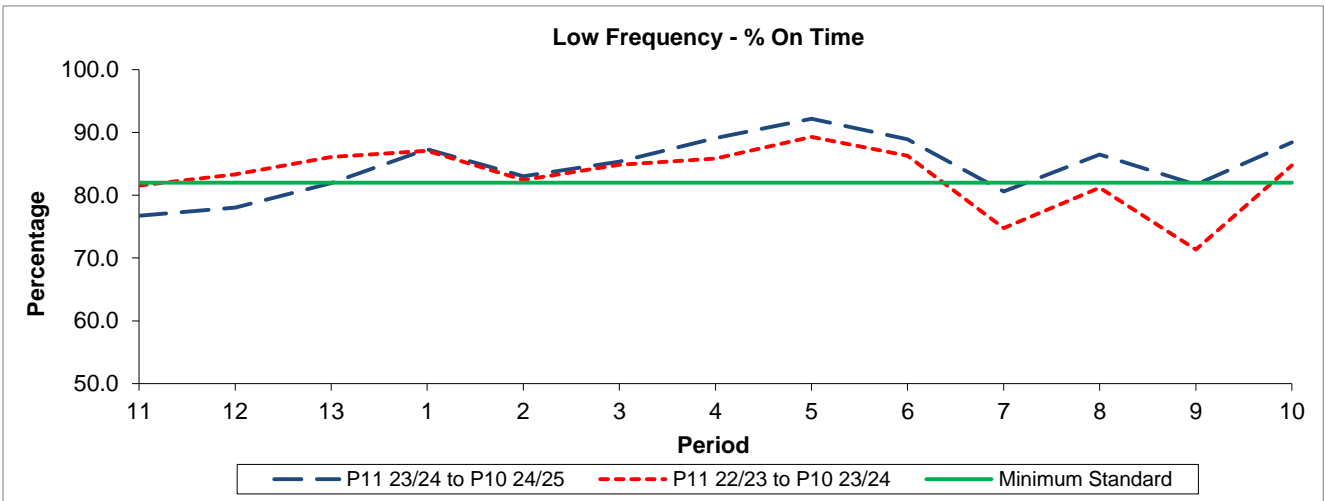


QSI & Mileage Performance Results

Route 293

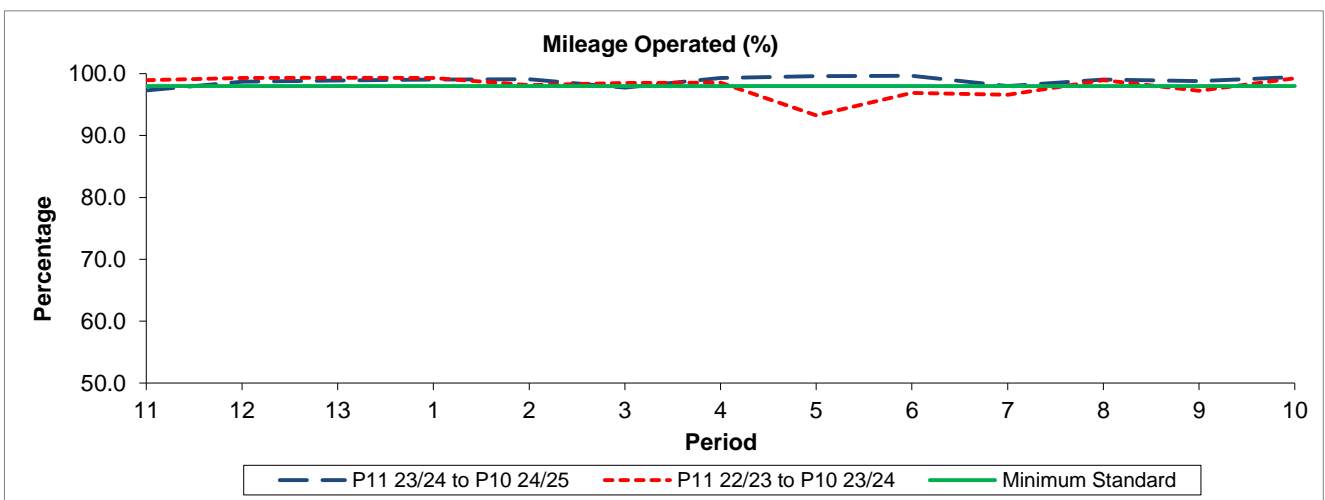
Reliability Performance



Period	11	12	13	1	2	3	4	5	6	7	8	9	10
P11 23/24 to P10 24/25	76.74	78.04	81.94	87.30	83.04	85.34	89.11	92.18	88.90	80.60	86.49	81.69	88.39
P11 22/23 to P10 23/24	81.53	83.33	86.08	87.06	82.41	84.87	85.86	89.29	86.28	74.75	81.18	71.35	84.73
Minimum Standard	82.00	82.00	82.00	82.00	82.00	82.00	82.00	82.00	82.00	82.00	82.00	82.00	82.00

% On Time performance figures are based on four weeks data

Mileage Performance



Period	11	12	13	1	2	3	4	5	6	7	8	9	10
P11 23/24 to P10 24/25	97.29	98.70	98.88	99.06	99.08	97.76	99.32	99.62	99.65	98.01	99.05	98.78	99.44
P11 22/23 to P10 23/24	98.95	99.32	99.34	99.31	98.15	98.47	98.53	93.27	96.87	96.58	98.96	97.26	99.25
Minimum Standard	98.00	98.00	98.00	98.00	98.00	98.00	98.00	98.00	98.00	98.00	98.00	98.00	98.00

Mileage Performance figures are based on four weeks data