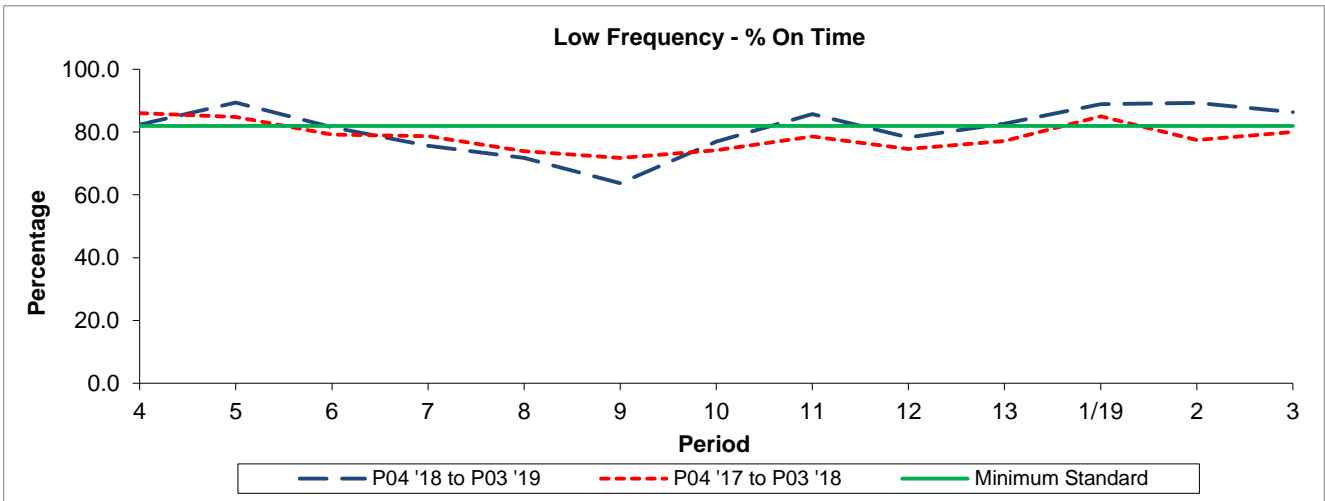


QSI & Mileage Performance Results

Route 292

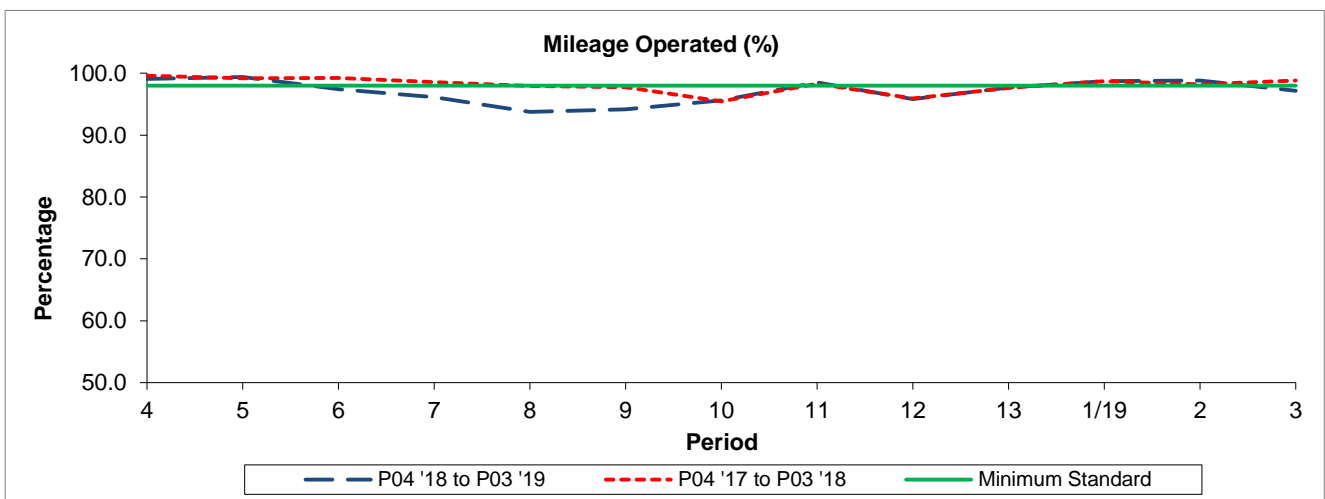
Reliability Performance



Period	4	5	6	7	8	9	10	11	12	13	1/19	2	3
P04 '18 to P03 '19	82.36	89.42	81.56	75.66	71.77	63.69	76.92	85.79	78.27	82.66	88.90	89.34	86.33
P04 '17 to P03 '18	85.99	84.81	79.17	78.71	73.94	71.75	74.19	78.64	74.64	77.14	85.02	77.49	80.03
Minimum Standard	82.00	82.00	82.00	82.00	82.00	82.00	82.00	82.00	82.00	82.00	82.00	82.00	82.00

% On Time performance figures are based on four weeks data

Mileage Performance



Period	4	5	6	7	8	9	10	11	12	13	1/19	2	3
P04 '18 to P03 '19	99.08	99.37	97.45	96.13	93.76	94.17	95.60	98.51	95.84	97.70	98.72	98.83	97.18
P04 '17 to P03 '18	99.59	99.21	99.26	98.59	97.94	97.73	95.45	98.29	95.93	97.64	98.72	98.22	98.85
Minimum Standard	98.00	98.00	98.00	98.00	98.00	98.00	98.00	98.00	98.00	98.00	98.00	98.00	98.00

Mileage Performance figures are based on four weeks data