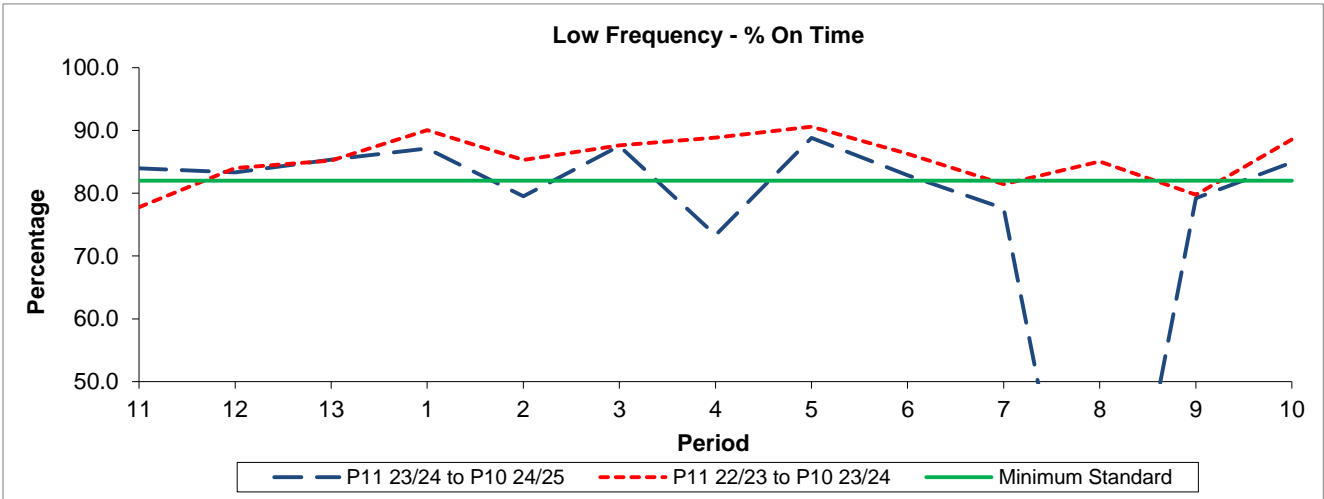


QSI & Mileage Performance Results

Route 290

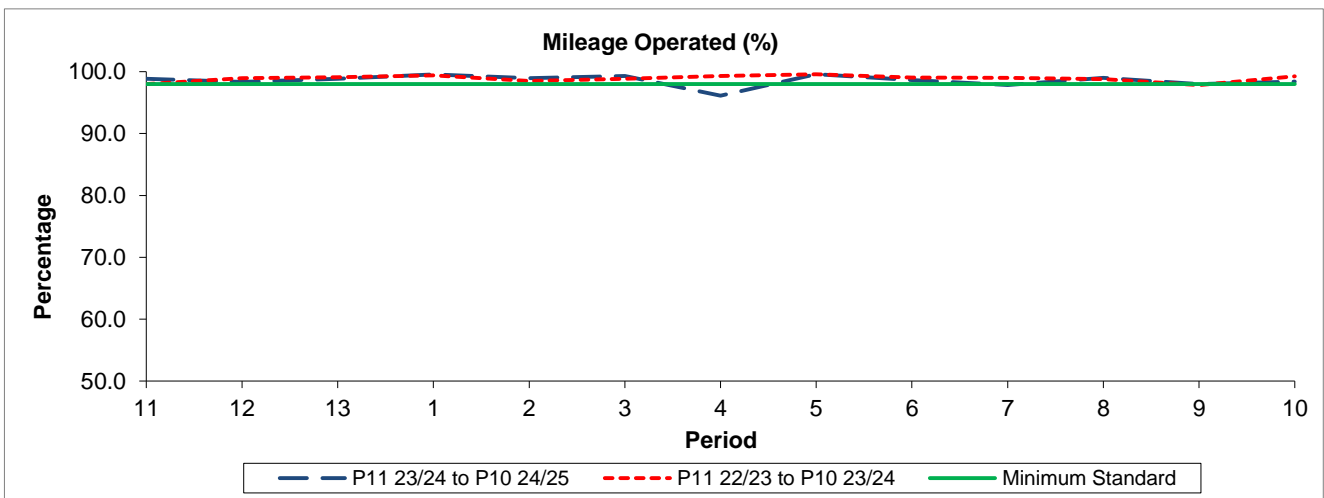
Reliability Performance



Period	11	12	13	1	2	3	4	5	6	7	8	9	10
P11 23/24 to P10 24/25	83.98	83.32	85.33	87.12	79.50	87.54	73.34	88.81	82.85	77.60		79.21	84.91
P11 22/23 to P10 23/24	77.78	84.00	85.19	90.03	85.28	87.60	88.88	90.60	86.28	81.45	85.04	79.77	88.56
Minimum Standard	82.00	82.00	82.00	82.00	82.00	82.00	82.00	82.00	82.00	82.00		82.00	82.00

% On Time performance figures are based on four weeks data

Mileage Performance



Period	11	12	13	1	2	3	4	5	6	7	8	9	10
P11 23/24 to P10 24/25	98.83	98.34	98.84	99.56	98.94	99.28	96.12	99.59	98.63	97.84	98.99	98.02	98.38
P11 22/23 to P10 23/24	97.99	98.97	99.09	99.40	98.50	98.83	99.31	99.57	99.07	99.02	98.80	97.83	99.23
Minimum Standard	98.00	98.00	98.00	98.00	98.00	98.00	98.00	98.00	98.00	98.00	98.00	98.00	98.00

Mileage Performance figures are based on four weeks data