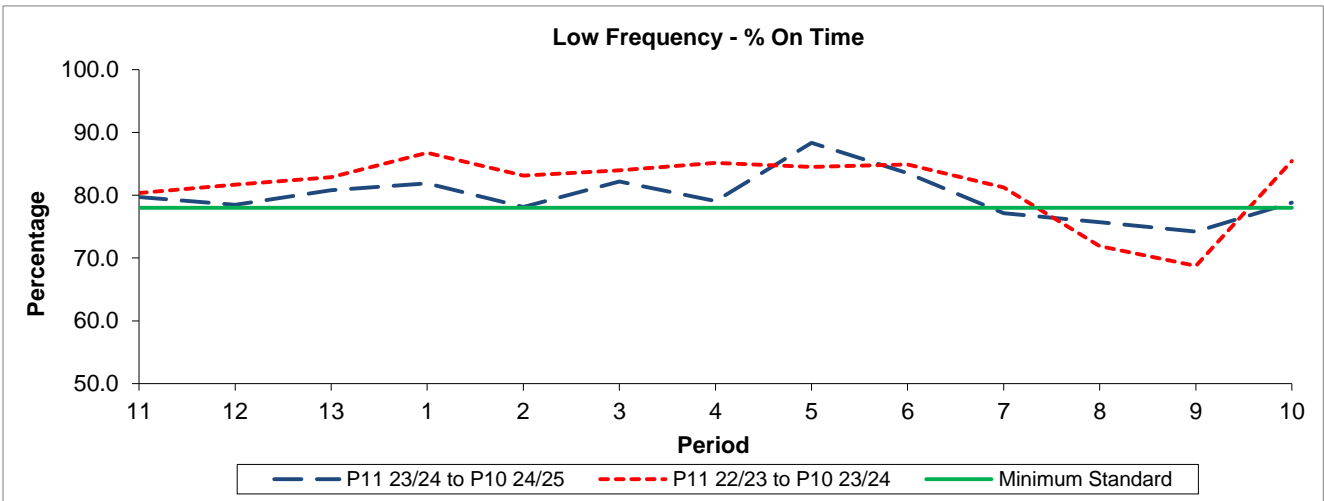


QSI & Mileage Performance Results

Route 287

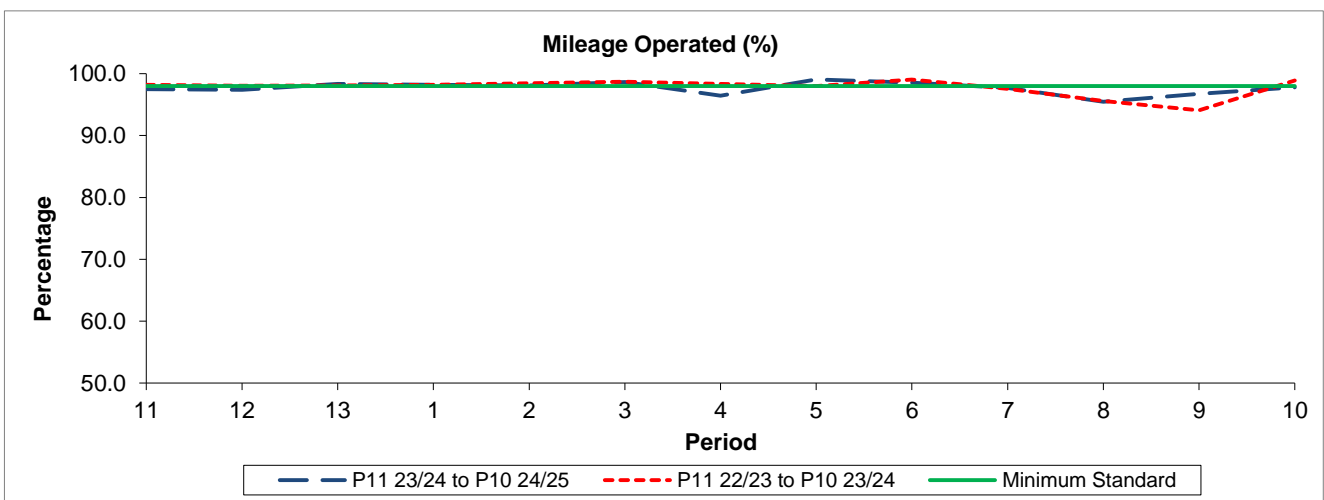
Reliability Performance



Period	11	12	13	1	2	3	4	5	6	7	8	9	10
P11 23/24 to P10 24/25	79.71	78.49	80.81	81.88	78.12	82.20	79.09	88.35	83.54	77.15	75.71	74.21	78.84
P11 22/23 to P10 23/24	80.36	81.70	82.87	86.75	83.13	83.95	85.16	84.49	84.93	81.26	71.88	68.75	85.44
Minimum Standard	78.00	78.00	78.00	78.00	78.00	78.00	78.00	78.00	78.00	78.00	78.00	78.00	78.00

% On Time performance figures are based on four weeks data

Mileage Performance



Period	11	12	13	1	2	3	4	5	6	7	8	9	10
P11 23/24 to P10 24/25	97.48	97.40	98.35	98.22	98.11	98.67	96.43	99.06	98.53	97.69	95.46	96.74	97.80
P11 22/23 to P10 23/24	98.18	98.02	98.10	98.21	98.46	98.70	98.37	97.98	99.04	97.53	95.58	94.07	98.88
Minimum Standard	98.00	98.00	98.00	98.00	98.00	98.00	98.00	98.00	98.00	98.00	98.00	98.00	98.00

Mileage Performance figures are based on four weeks data