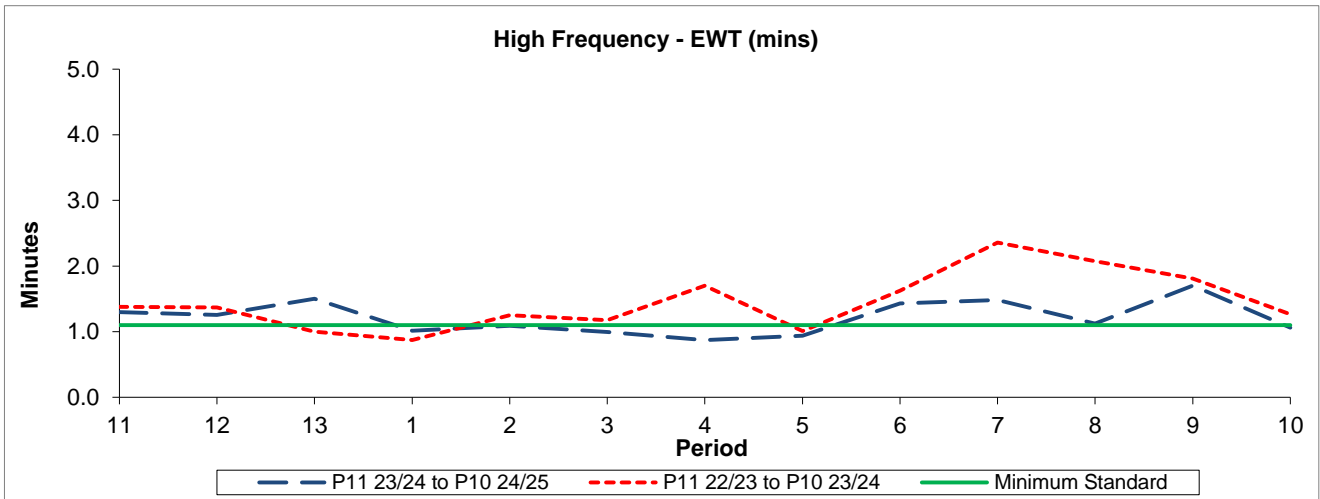


QSI & Mileage Performance Results

# Route 286

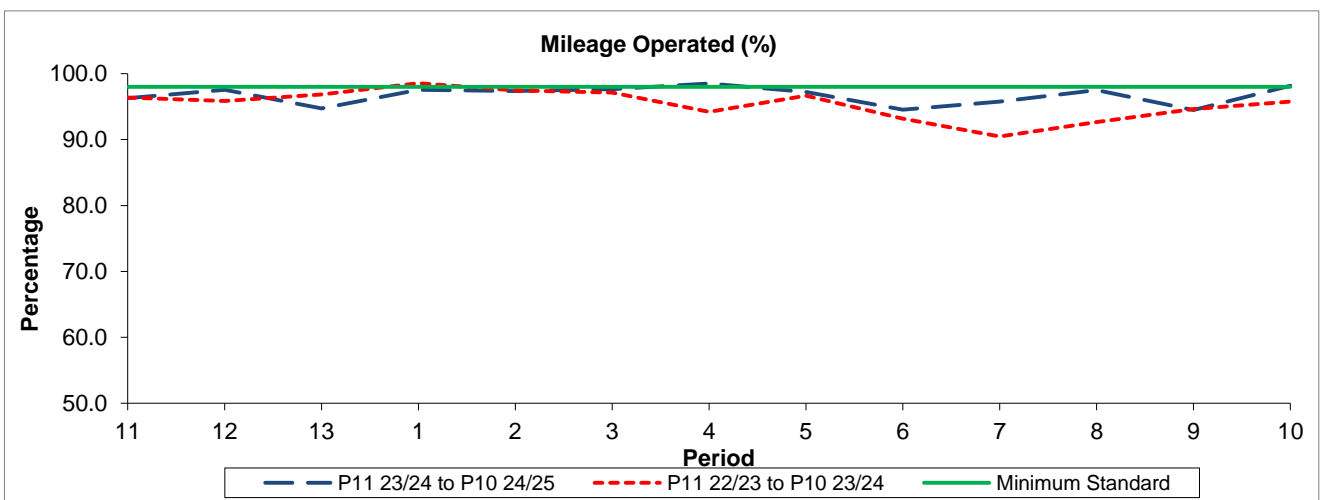
## Reliability Performance



Period	11	12	13	1	2	3	4	5	6	7	8	9	10
P11 23/24 to P10 24/25	1.30	1.26	1.50	1.01	1.09	0.99	0.87	0.94	1.43	1.48	1.12	1.70	1.06
P11 22/23 to P10 23/24	1.38	1.37	1.00	0.87	1.25	1.17	1.70	1.01	1.63	2.36	2.07	1.81	1.27
Minimum Standard	1.10	1.10	1.10	1.10	1.10	1.10	1.10	1.10	1.10	1.10	1.10	1.10	1.10

The EWT (mins) figures are based on four weeks data

## Mileage Performance



Period	11	12	13	1	2	3	4	5	6	7	8	9	10
P11 23/24 to P10 24/25	96.27	97.57	94.72	97.56	97.38	97.62	98.51	97.22	94.55	95.78	97.49	94.48	98.17
P11 22/23 to P10 23/24	96.38	95.85	96.84	98.56	97.44	97.14	94.19	96.66	93.15	90.47	92.67	94.64	95.78
Minimum Standard	98.00	98.00	98.00	98.00	98.00	98.00	98.00	98.00	98.00	98.00	98.00	98.00	98.00

Mileage Performance figures are based on four weeks data