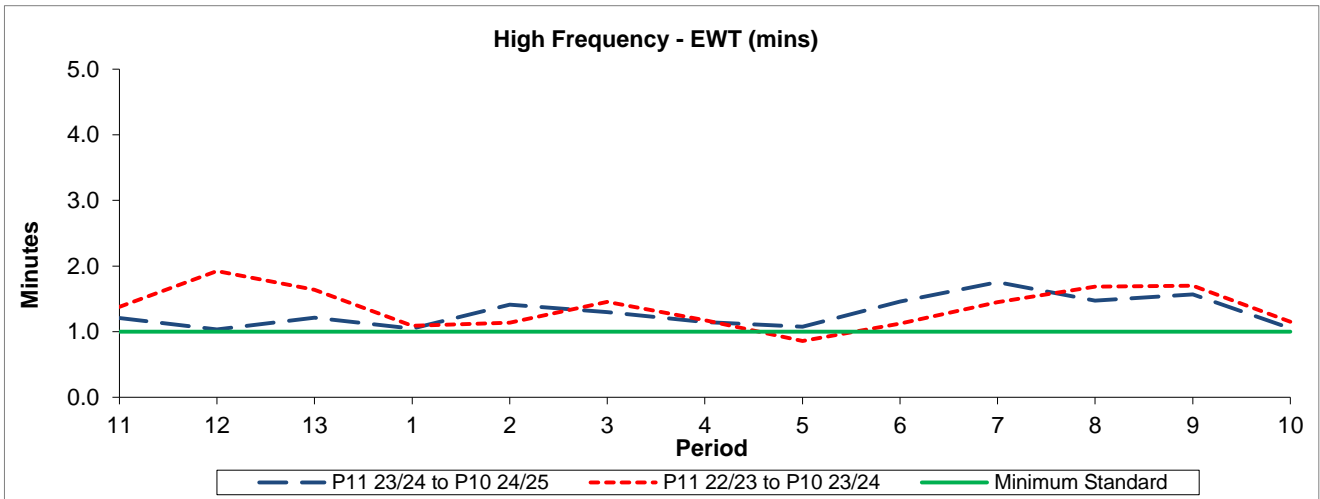


QSI & Mileage Performance Results

# Route 282

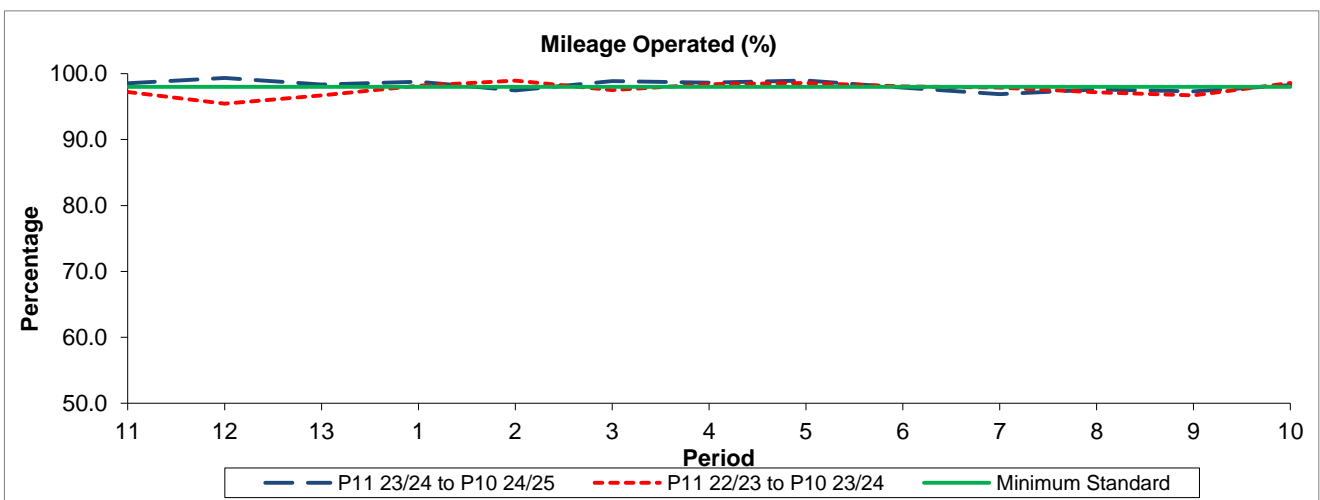
## Reliability Performance



Period	11	12	13	1	2	3	4	5	6	7	8	9	10
P11 23/24 to P10 24/25	1.21	1.03	1.21	1.04	1.41	1.30	1.14	1.08	1.46	1.75	1.48	1.57	1.05
P11 22/23 to P10 23/24	1.38	1.92	1.64	1.09	1.14	1.46	1.18	0.86	1.12	1.45	1.69	1.70	1.15
Minimum Standard	1.00	1.00	1.00	1.00	1.00	1.00	1.00	1.00	1.00	1.00	1.00	1.00	1.00

The EWT (mins) figures are based on four weeks data

## Mileage Performance



Period	11	12	13	1	2	3	4	5	6	7	8	9	10
P11 23/24 to P10 24/25	98.54	99.35	98.34	98.78	97.43	98.86	98.63	98.95	97.87	96.89	97.61	97.30	98.26
P11 22/23 to P10 23/24	97.21	95.45	96.72	98.16	98.94	97.50	98.40	98.59	98.07	97.88	97.18	96.68	98.58
Minimum Standard	98.00	98.00	98.00	98.00	98.00	98.00	98.00	98.00	98.00	98.00	98.00	98.00	98.00

Mileage Performance figures are based on four weeks data