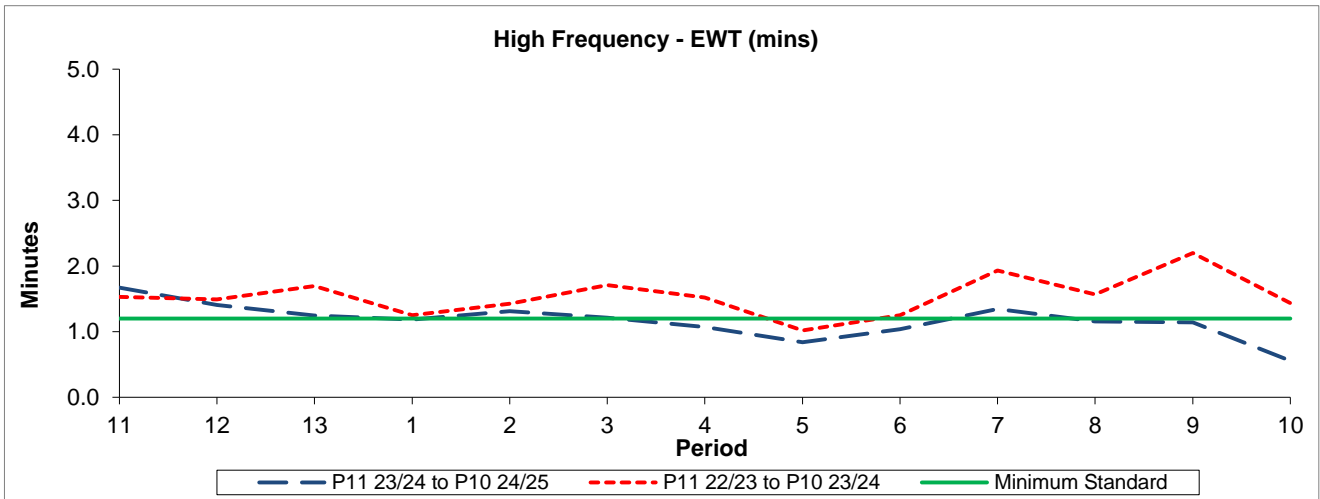


QSI & Mileage Performance Results

# Route 281

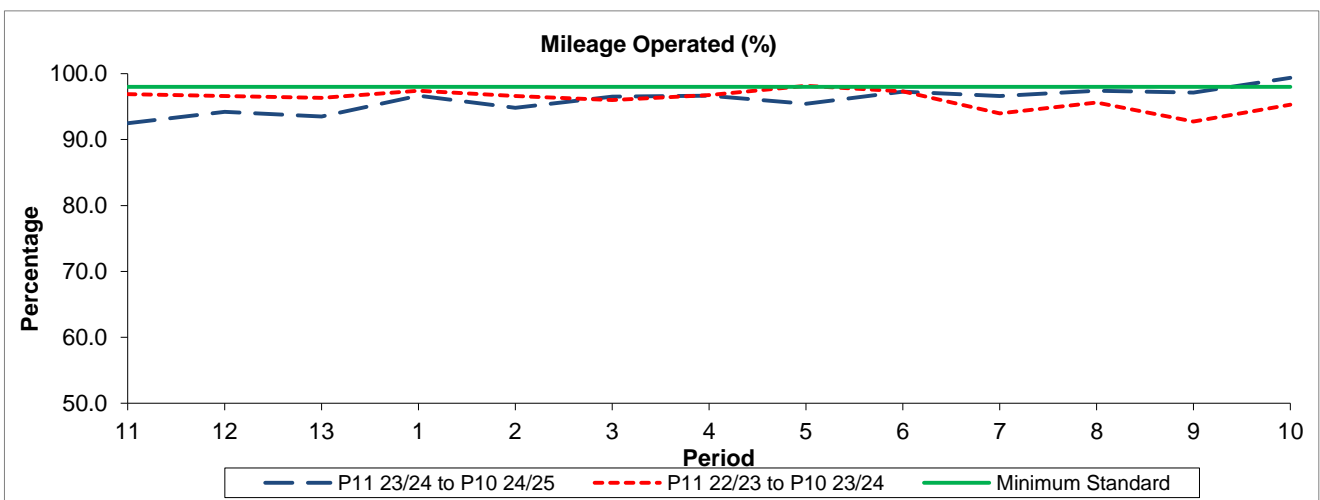
## Reliability Performance



Period	11	12	13	1	2	3	4	5	6	7	8	9	10
P11 23/24 to P10 24/25	1.67	1.41	1.25	1.19	1.31	1.21	1.07	0.84	1.04	1.34	1.16	1.14	0.56
P11 22/23 to P10 23/24	1.53	1.49	1.69	1.25	1.43	1.71	1.52	1.02	1.25	1.93	1.57	2.20	1.44
Minimum Standard	1.20	1.20	1.20	1.20	1.20	1.20	1.20	1.20	1.20	1.20	1.20	1.20	1.20

The EWT (mins) figures are based on four weeks data

## Mileage Performance



Period	11	12	13	1	2	3	4	5	6	7	8	9	10
P11 23/24 to P10 24/25	92.48	94.20	93.50	96.65	94.84	96.51	96.64	95.43	97.25	96.60	97.40	97.14	99.37
P11 22/23 to P10 23/24	96.90	96.61	96.32	97.43	96.62	95.98	96.77	98.15	97.31	93.98	95.63	92.74	95.31
Minimum Standard	98.00	98.00	98.00	98.00	98.00	98.00	98.00	98.00	98.00	98.00	98.00	98.00	98.00

Mileage Performance figures are based on four weeks data