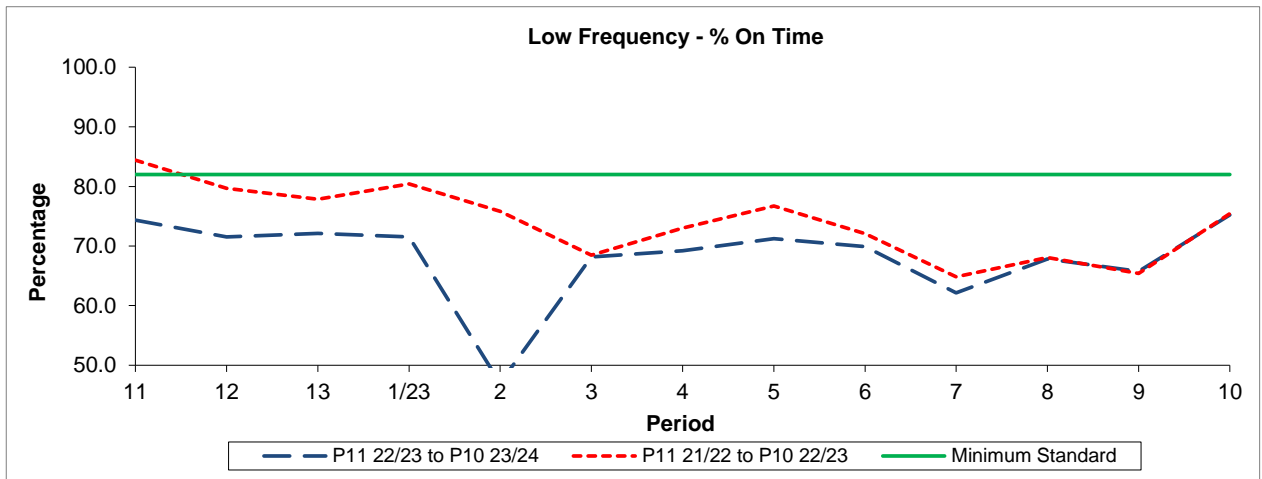


QSI & Mileage Performance Results

# Route 278

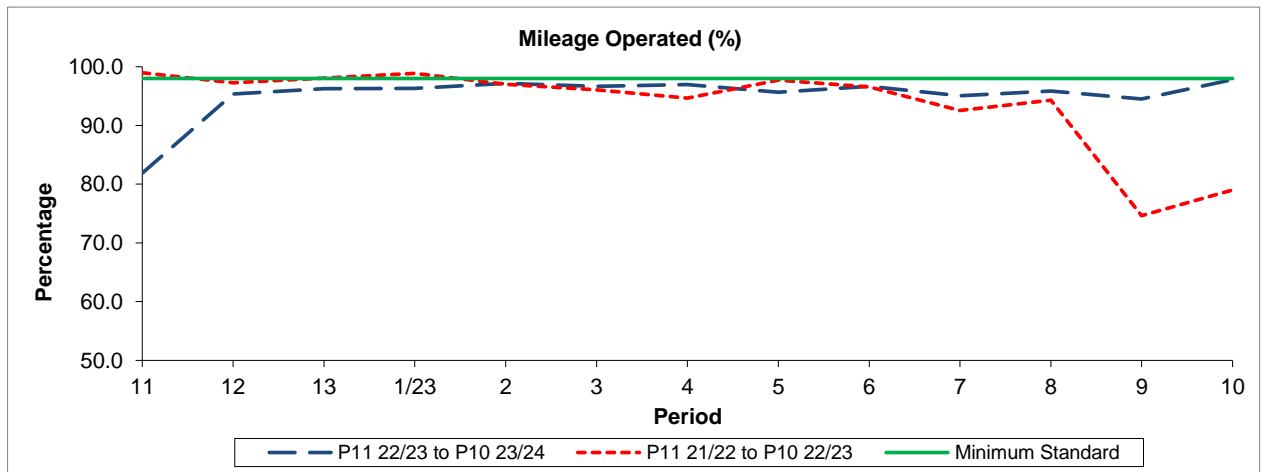
## Reliability Performance



Period	11	12	13	1/23	2	3	4	5	6	7	8	9	10
P11 22/23 to P10 23/24	74.33	71.53	72.14	71.53	47.01	68.18	69.22	71.24	69.91	62.16	67.85	65.76	75.22
P11 21/22 to P10 22/23	84.40	79.68	77.87	80.42	75.85	68.45	73.02	76.72	72.06	64.84	68.08	65.39	75.42
Minimum Standard	82.00	82.00	82.00	82.00	82.00	82.00	82.00	82.00	82.00	82.00	82.00	82.00	82.00

% On Time performance figures are based on four weeks data

## Mileage Performance



Period	11	12	13	1/23	2	3	4	5	6	7	8	9	10
P11 22/23 to P10 23/24	81.88	95.37	96.27	96.33	97.17	96.66	96.95	95.64	96.68	95.07	95.88	94.50	97.81
P11 21/22 to P10 22/23	98.97	97.25	98.06	98.88	97.02	96.07	94.66	97.69	96.58	92.56	94.31	74.64	79.02
Minimum Standard	98.00	98.00	98.00	98.00	98.00	98.00	98.00	98.00	98.00	98.00	98.00	98.00	98.00

Mileage Performance figures are based on four weeks data