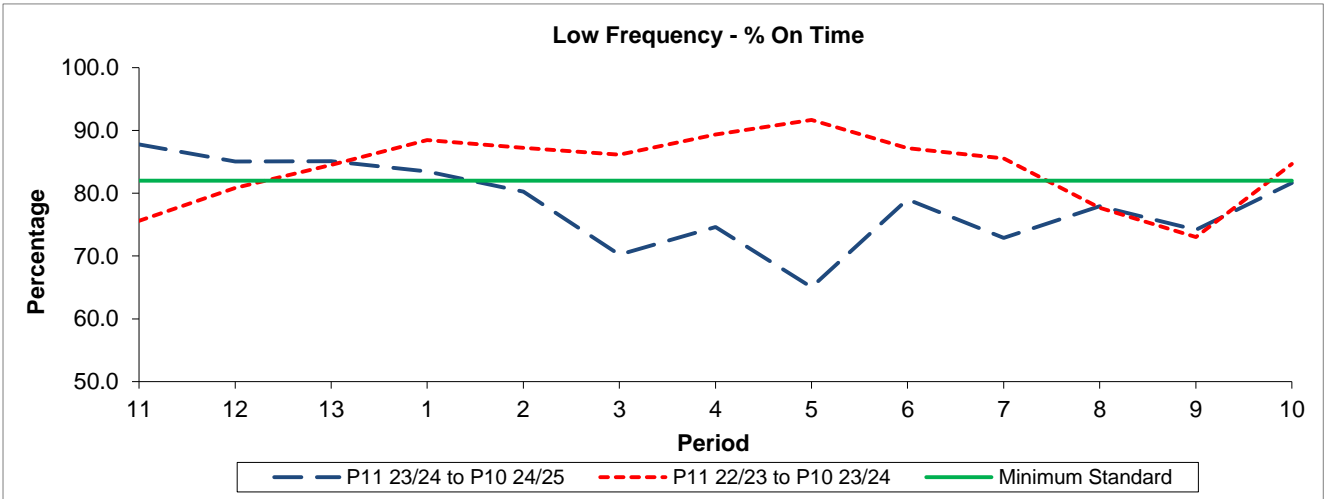


QSI & Mileage Performance Results

Route 272

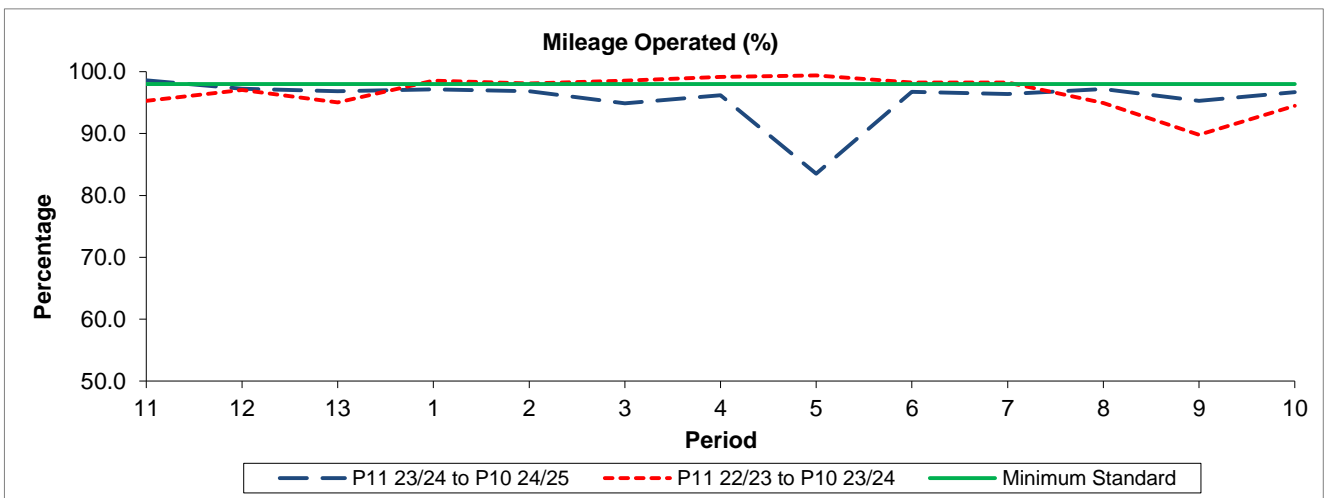
Reliability Performance



Period	11	12	13	1	2	3	4	5	6	7	8	9	10
P11 23/24 to P10 24/25	87.77	85.04	85.12	83.49	80.28	70.20	74.64	65.03	79.01	72.89	77.95	74.16	81.64
P11 22/23 to P10 23/24	75.58	80.86	84.52	88.45	87.20	86.15	89.34	91.67	87.19	85.53	77.69	73.02	84.68
Minimum Standard	82.00	82.00	82.00	82.00	82.00	82.00	82.00	82.00	82.00	82.00	82.00	82.00	82.00

% On Time performance figures are based on four weeks data

Mileage Performance



Period	11	12	13	1	2	3	4	5	6	7	8	9	10
P11 23/24 to P10 24/25	98.60	97.25	96.85	97.16	96.85	94.90	96.19	83.51	96.72	96.41	97.21	95.27	96.69
P11 22/23 to P10 23/24	95.29	97.06	95.06	98.53	98.10	98.53	99.16	99.39	98.24	98.22	94.92	89.80	94.46
Minimum Standard	98.00	98.00	98.00	98.00	98.00	98.00	98.00	98.00	98.00	98.00	98.00	98.00	98.00

Mileage Performance figures are based on four weeks data