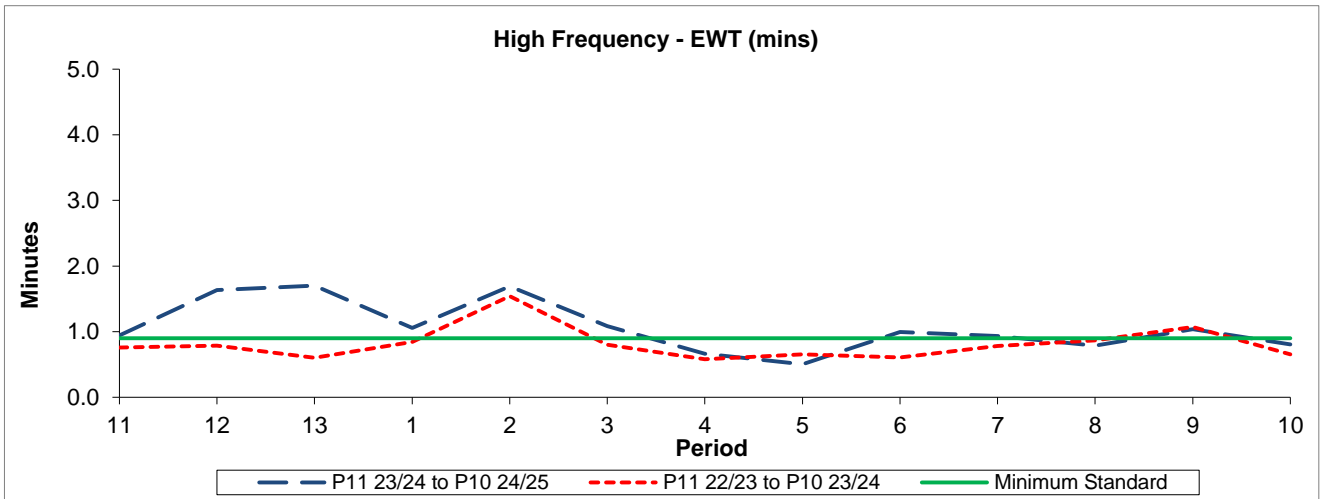


QSI & Mileage Performance Results

# Route 264

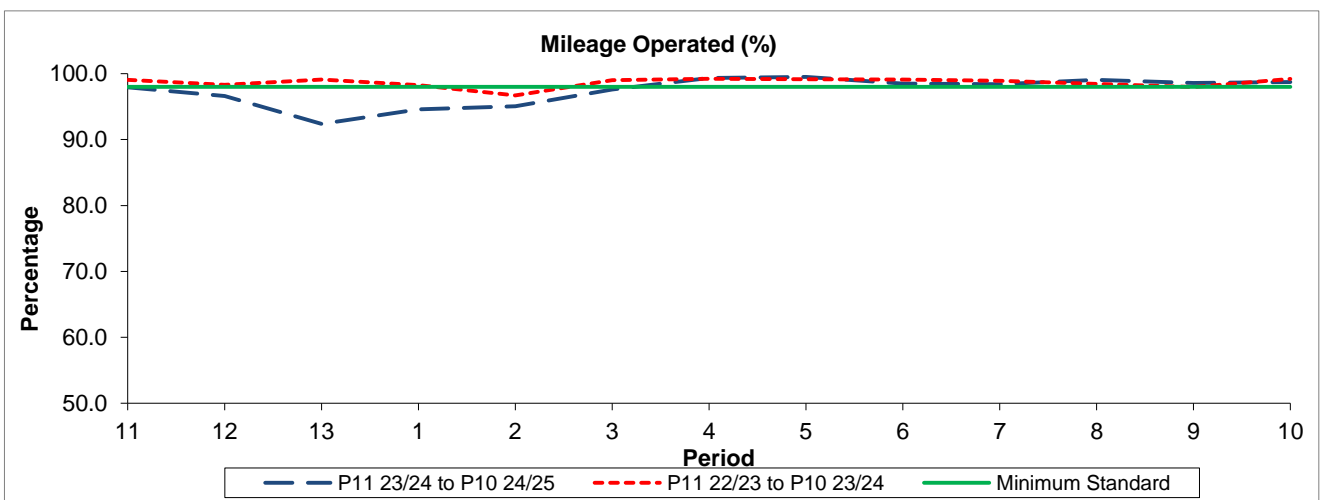
## Reliability Performance



Period	11	12	13	1	2	3	4	5	6	7	8	9	10
P11 23/24 to P10 24/25	0.94	1.63	1.70	1.06	1.69	1.08	0.66	0.50	1.00	0.93	0.79	1.04	0.81
P11 22/23 to P10 23/24	0.76	0.79	0.60	0.84	1.54	0.80	0.58	0.65	0.61	0.78	0.87	1.07	0.66
Minimum Standard	0.90	0.90	0.90	0.90	0.90	0.90	0.90	0.90	0.90	0.90	0.90	0.90	0.90

The EWT (mins) figures are based on four weeks data

## Mileage Performance



Period	11	12	13	1	2	3	4	5	6	7	8	9	10
P11 23/24 to P10 24/25	97.93	96.61	92.38	94.57	95.06	97.62	99.36	99.50	98.49	98.40	99.08	98.59	98.75
P11 22/23 to P10 23/24	99.08	98.29	99.12	98.25	96.70	99.01	99.22	99.15	99.12	98.93	98.45	97.97	99.18
Minimum Standard	98.00	98.00	98.00	98.00	98.00	98.00	98.00	98.00	98.00	98.00	98.00	98.00	98.00

Mileage Performance figures are based on four weeks data