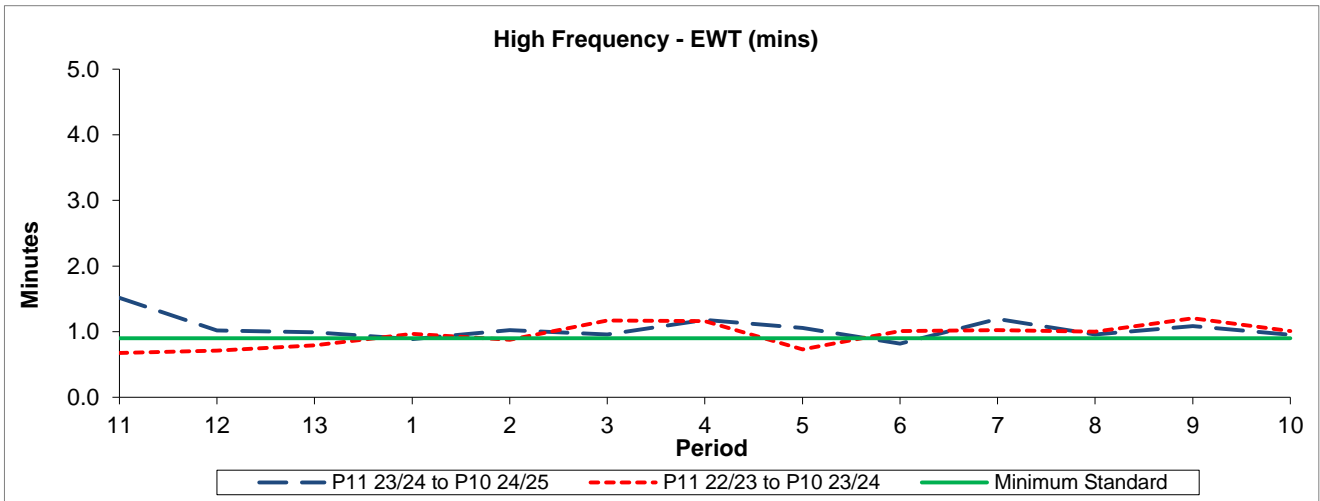


QSI & Mileage Performance Results

# Route 241

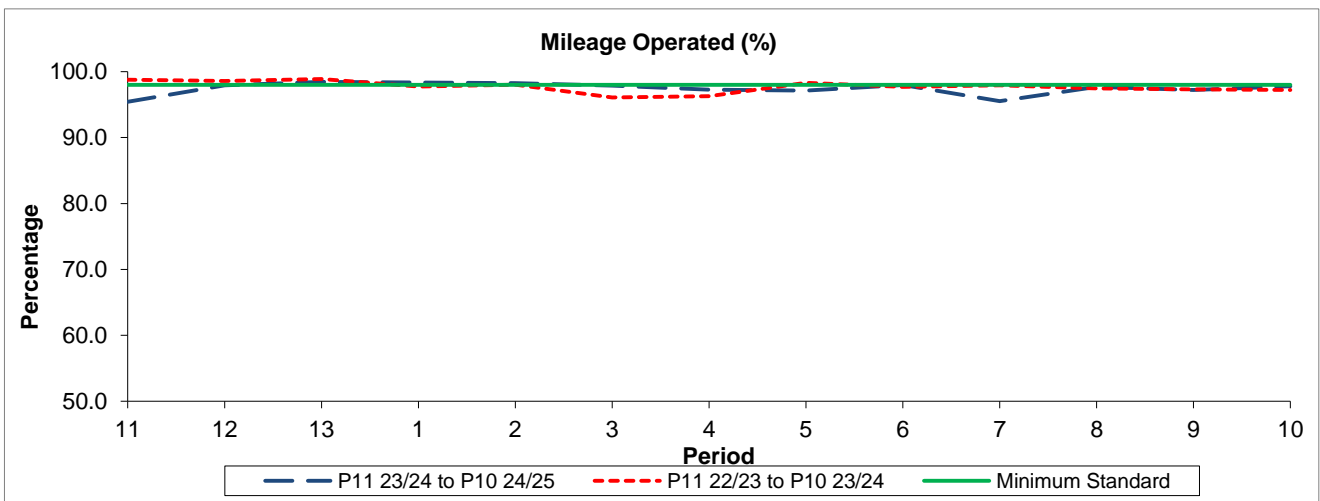
## Reliability Performance



Period	11	12	13	1	2	3	4	5	6	7	8	9	10
P11 23/24 to P10 24/25	1.52	1.02	0.99	0.89	1.02	0.96	1.18	1.06	0.82	1.20	0.96	1.09	0.95
P11 22/23 to P10 23/24	0.68	0.71	0.79	0.97	0.88	1.17	1.16	0.73	1.01	1.02	1.00	1.20	1.01
Minimum Standard	0.90	0.90	0.90	0.90	0.90	0.90	0.90	0.90	0.90	0.90	0.90	0.90	0.90

The EWT (mins) figures are based on four weeks data

## Mileage Performance



Period	11	12	13	1	2	3	4	5	6	7	8	9	10
P11 23/24 to P10 24/25	95.43	97.91	98.45	98.36	98.24	97.90	97.26	97.15	97.99	95.53	97.69	97.20	97.78
P11 22/23 to P10 23/24	98.78	98.57	98.88	97.75	98.05	96.09	96.30	98.32	97.70	97.93	97.45	97.30	97.24
Minimum Standard	98.00	98.00	98.00	98.00	98.00	98.00	98.00	98.00	98.00	98.00	98.00	98.00	98.00

Mileage Performance figures are based on four weeks data