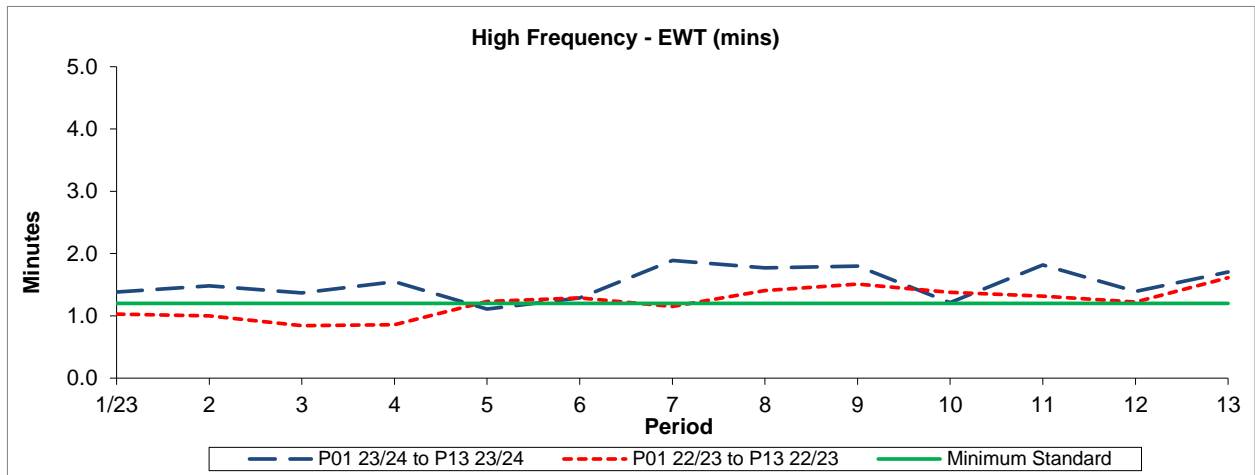


QSI & Mileage Performance Results

# Route 236

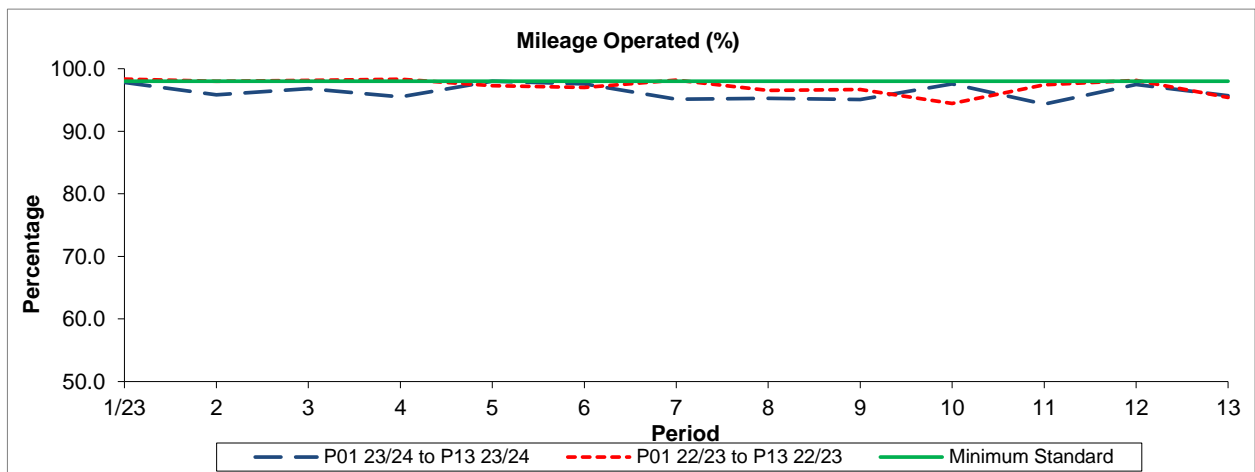
## Reliability Performance



Period	1/23	2	3	4	5	6	7	8	9	10	11	12	13
P01 23/24 to P13 23/24	1.38	1.48	1.37	1.55	1.11	1.29	1.89	1.77	1.80	1.21	1.82	1.39	1.70
P01 22/23 to P13 22/23	1.03	1.00	0.84	0.86	1.23	1.29	1.15	1.41	1.51	1.38	1.32	1.22	1.61
Minimum Standard	1.20	1.20	1.20	1.20	1.20	1.20	1.20	1.20	1.20	1.20	1.20	1.20	1.20

The EWT (mins) figures are based on four weeks data

## Mileage Performance



Period	1/23	2	3	4	5	6	7	8	9	10	11	12	13
P01 23/24 to P13 23/24	97.79	95.85	96.80	95.51	98.01	97.59	95.13	95.25	95.06	97.59	94.34	97.47	95.69
P01 22/23 to P13 22/23	98.34	97.99	98.14	98.30	97.28	96.99	98.16	96.52	96.68	94.45	97.43	98.14	95.39
Minimum Standard	98.00	98.00	98.00	98.00	98.00	98.00	98.00	98.00	98.00	98.00	98.00	98.00	98.00

Mileage Performance figures are based on four weeks data