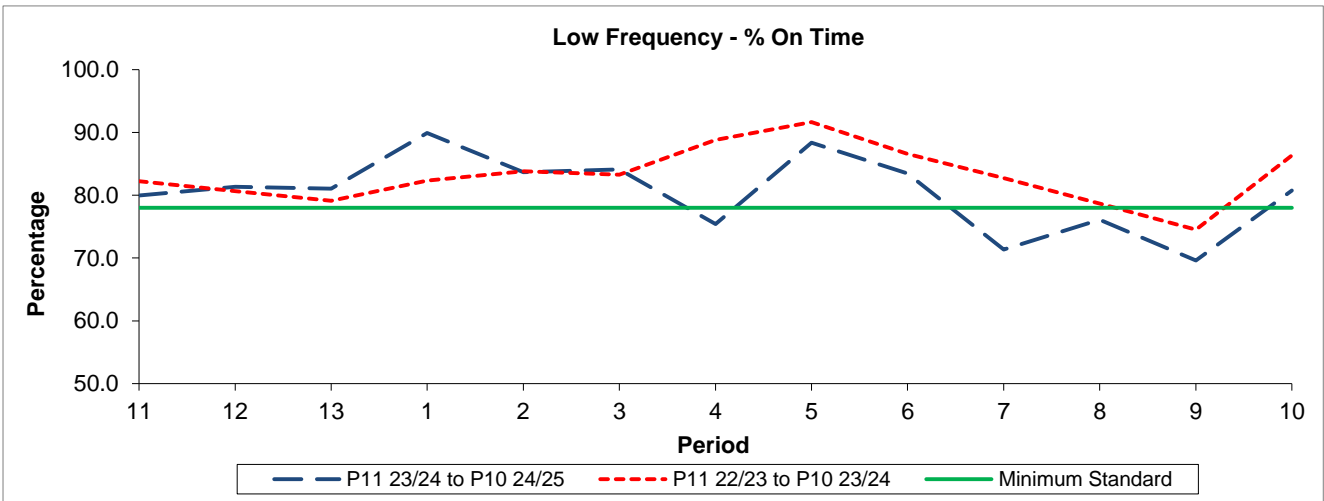


QSI & Mileage Performance Results

# Route 231

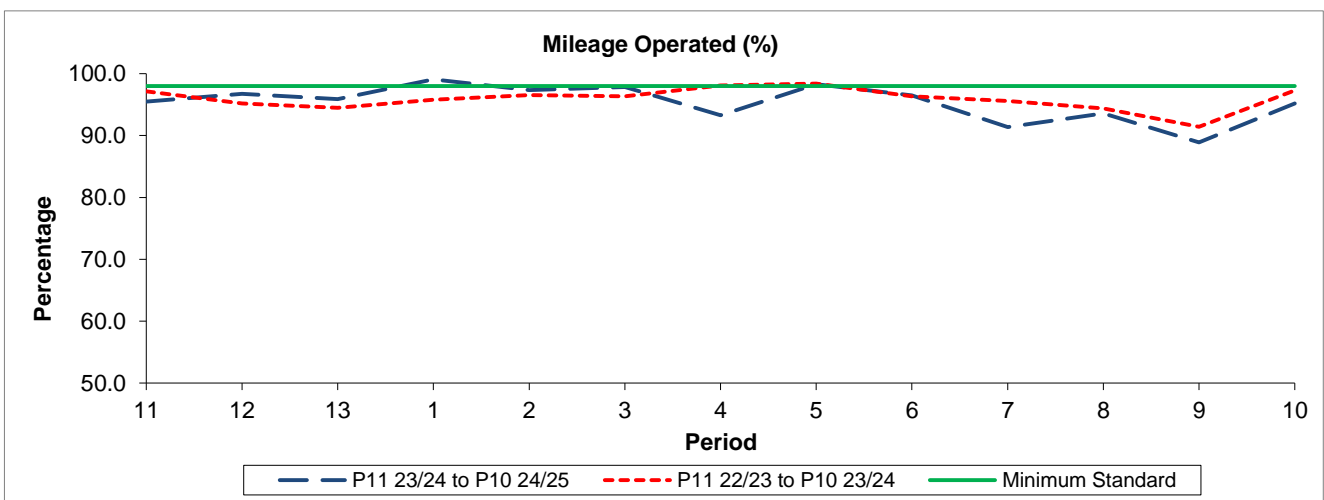
## Reliability Performance



Period	11	12	13	1	2	3	4	5	6	7	8	9	10
P11 23/24 to P10 24/25	79.97	81.32	81.06	89.91	83.65	84.10	75.43	88.36	83.45	71.37	76.11	69.61	80.73
P11 22/23 to P10 23/24	82.24	80.66	79.14	82.35	83.79	83.26	88.80	91.65	86.58	82.71	78.67	74.52	86.34
Minimum Standard	78.00	78.00	78.00	78.00	78.00	78.00	78.00	78.00	78.00	78.00	78.00	78.00	78.00

% On Time performance figures are based on four weeks data

## Mileage Performance



Period	11	12	13	1	2	3	4	5	6	7	8	9	10
P11 23/24 to P10 24/25	95.48	96.72	95.90	99.08	97.35	97.87	93.30	98.27	96.47	91.38	93.60	88.89	95.20
P11 22/23 to P10 23/24	97.13	95.18	94.48	95.78	96.55	96.35	98.07	98.40	96.35	95.60	94.37	91.41	97.29
Minimum Standard	98.00	98.00	98.00	98.00	98.00	98.00	98.00	98.00	98.00	98.00	98.00	98.00	98.00

Mileage Performance figures are based on four weeks data