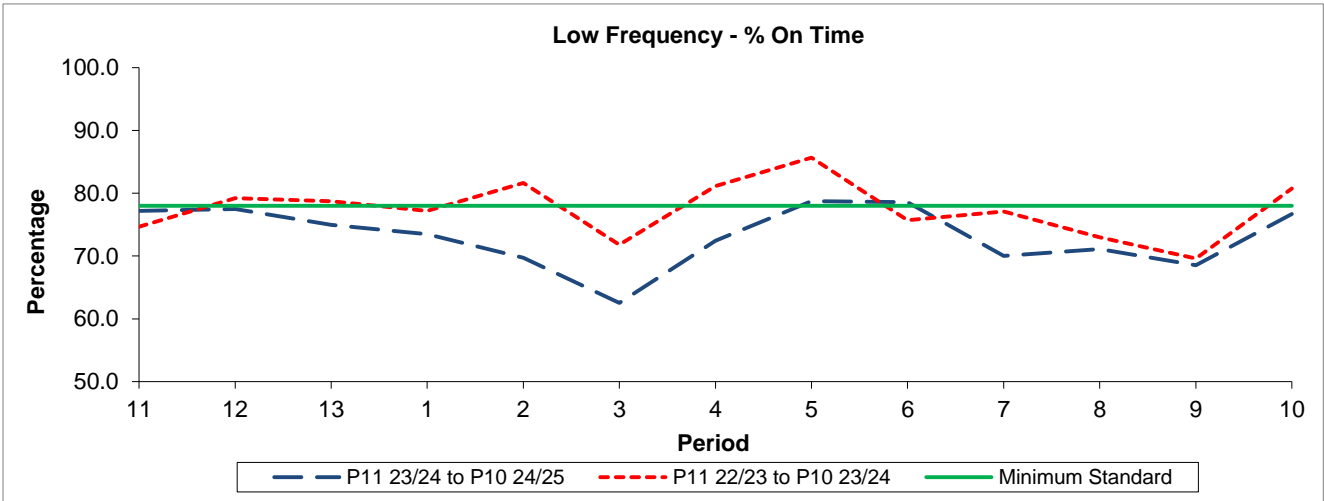


QSI & Mileage Performance Results

Route 230

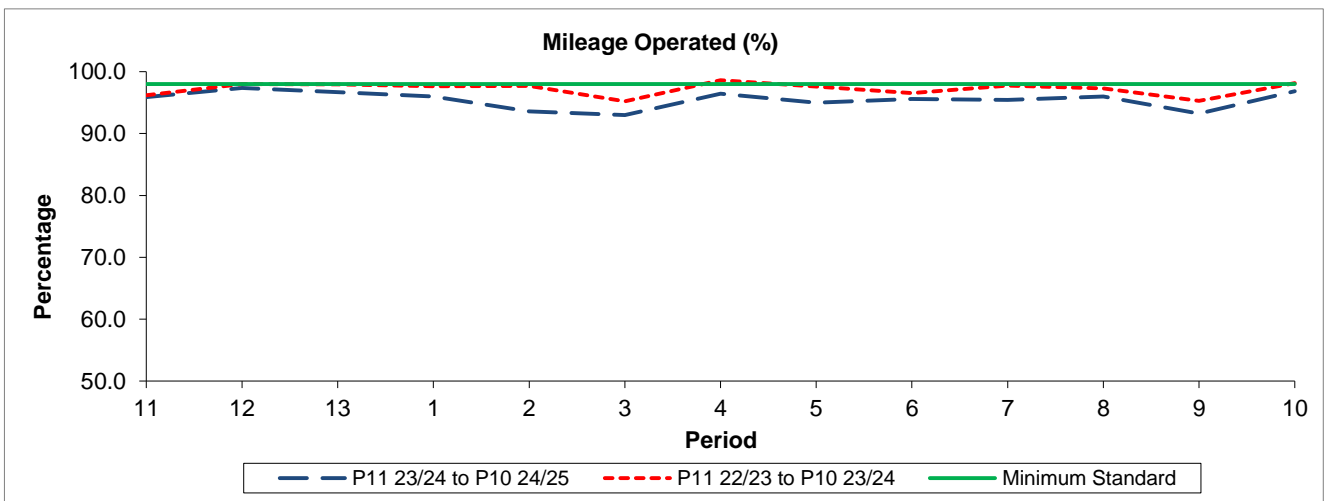
Reliability Performance



Period	11	12	13	1	2	3	4	5	6	7	8	9	10
P11 23/24 to P10 24/25	77.17	77.50	74.96	73.46	69.74	62.53	72.47	78.74	78.59	70.02	71.12	68.55	76.70
P11 22/23 to P10 23/24	74.68	79.20	78.70	77.17	81.64	71.79	81.16	85.66	75.72	77.07	72.96	69.60	80.74
Minimum Standard	78.00	78.00	78.00	78.00	78.00	78.00	78.00	78.00	78.00	78.00	78.00	78.00	78.00

% On Time performance figures are based on four weeks data

Mileage Performance



Period	11	12	13	1	2	3	4	5	6	7	8	9	10
P11 23/24 to P10 24/25	95.88	97.37	96.68	95.97	93.60	92.98	96.44	94.97	95.61	95.45	95.99	93.24	96.86
P11 22/23 to P10 23/24	96.18	98.01	97.93	97.63	97.71	95.21	98.62	97.61	96.53	97.74	97.29	95.28	98.13
Minimum Standard	98.00	98.00	98.00	98.00	98.00	98.00	98.00	98.00	98.00	98.00	98.00	98.00	98.00

Mileage Performance figures are based on four weeks data