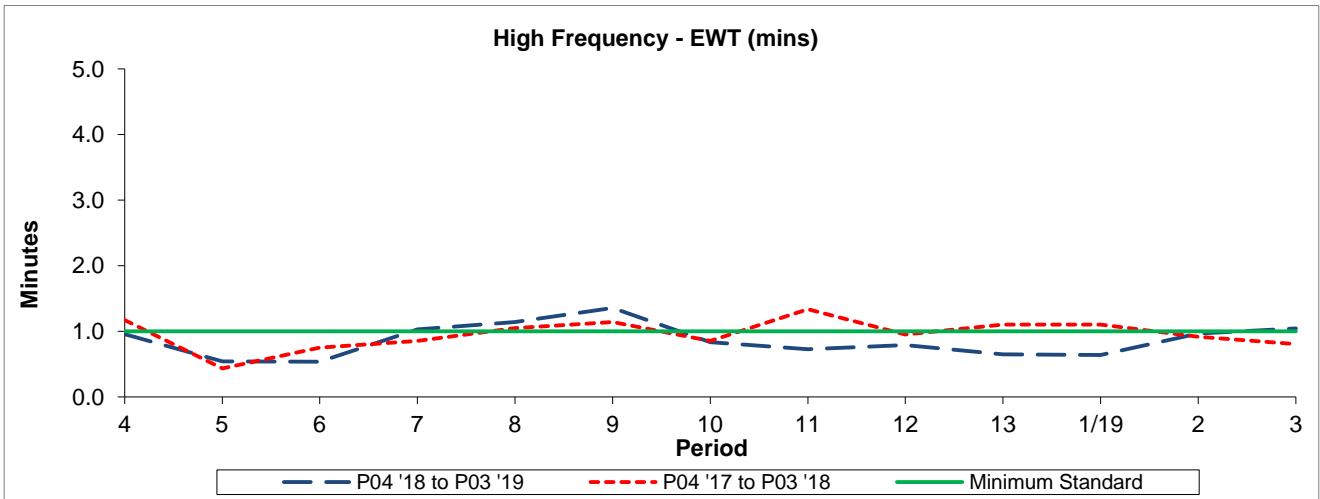


QSI & Mileage Performance Results

# Route 226

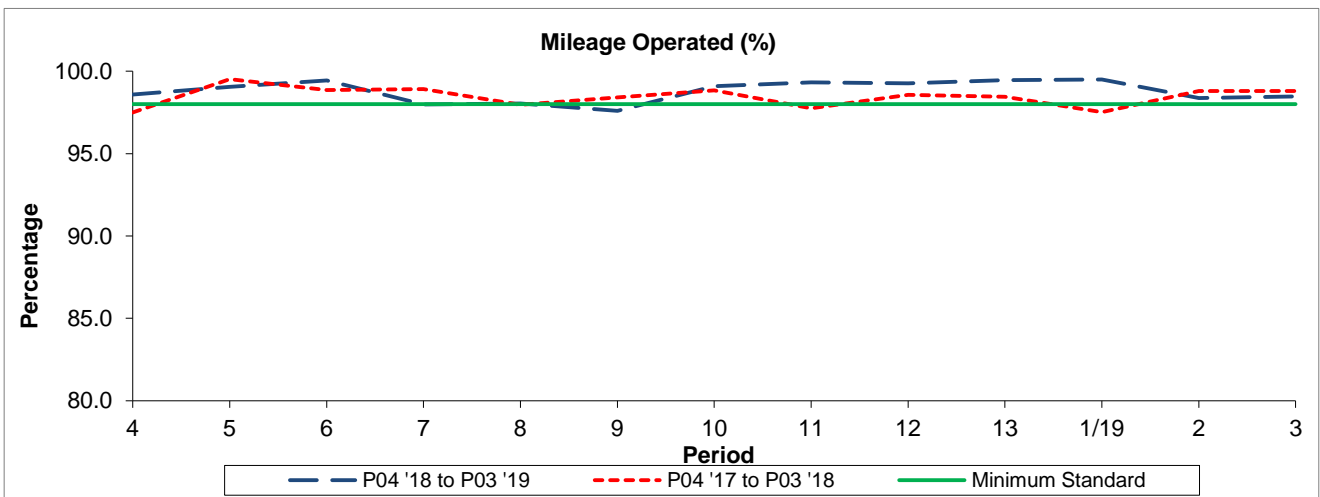
## Reliability Performance



Period	4	5	6	7	8	9	10	11	12	13	1/19	2	3
P04 '18 to P03 '19	0.96	0.54	0.53	1.03	1.14	1.36	0.83	0.73	0.79	0.65	0.64	0.97	1.05
P04 '17 to P03 '18	1.17	0.43	0.75	0.86	1.05	1.14	0.86	1.34	0.95	1.11	1.11	0.92	0.80
Minimum Standard	1.00	1.00	1.00	1.00	1.00	1.00	1.00	1.00	1.00	1.00	1.00	1.00	1.00

The EWT (mins) figures are based on four weeks data

## Mileage Performance



Period	4	5	6	7	8	9	10	11	12	13	1/19	2	3
P04 '18 to P03 '19	98.58	99.06	99.45	97.99	98.05	97.60	99.09	99.33	99.28	99.46	99.50	98.37	98.46
P04 '17 to P03 '18	97.49	99.53	98.86	98.93	97.96	98.42	98.85	97.75	98.56	98.45	97.52	98.81	98.80
Minimum Standard	98.00	98.00	98.00	98.00	98.00	98.00	98.00	98.00	98.00	98.00	98.00	98.00	98.00

Mileage Performance figures are based on four weeks data