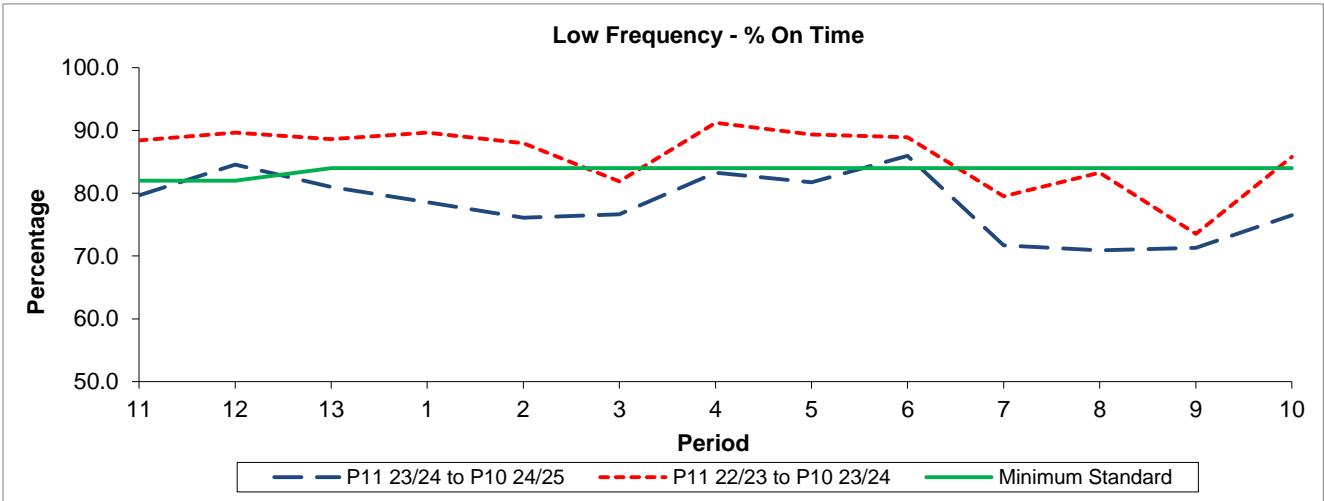


QSI & Mileage Performance Results

# Route 215

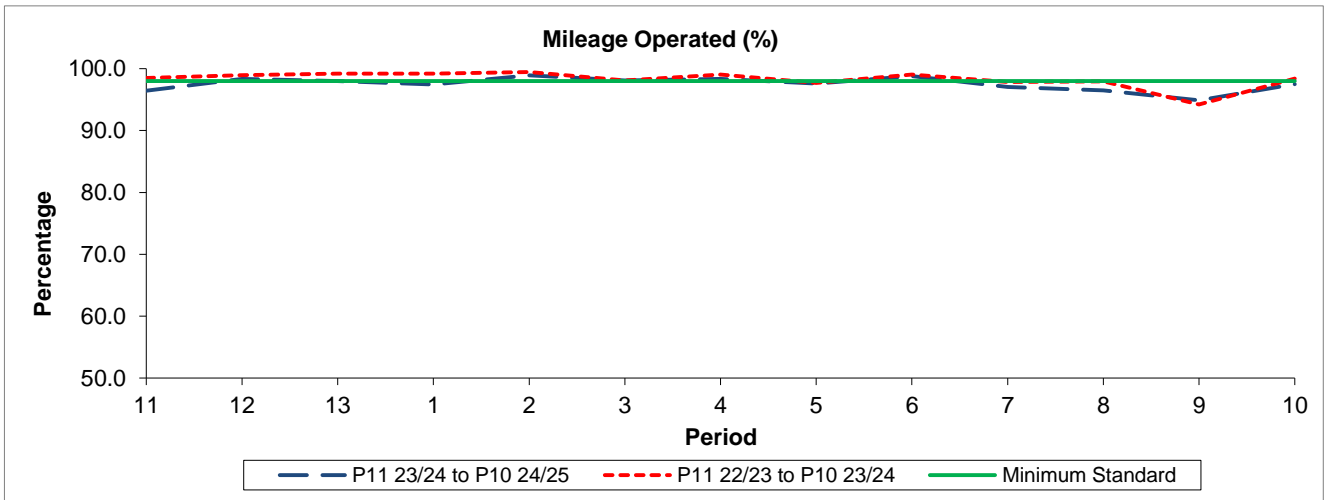
## Reliability Performance



Period	11	12	13	1	2	3	4	5	6	7	8	9	10
P11 23/24 to P10 24/25	79.66	84.54	80.98	78.58	76.08	76.64	83.30	81.73	85.95	71.71	70.91	71.29	76.49
P11 22/23 to P10 23/24	88.40	89.67	88.60	89.66	87.96	81.88	91.22	89.34	88.89	79.51	83.28	73.53	85.81
Minimum Standard	82.00	82.00	84.00	84.00	84.00	84.00	84.00	84.00	84.00	84.00	84.00	84.00	84.00

% On Time performance figures are based on four weeks data

## Mileage Performance



Period	11	12	13	1	2	3	4	5	6	7	8	9	10
P11 23/24 to P10 24/25	96.42	98.32	97.98	97.42	98.92	98.08	98.34	97.59	98.80	97.03	96.50	94.89	97.49
P11 22/23 to P10 23/24	98.50	98.96	99.19	99.18	99.46	98.09	99.07	97.68	99.07	97.83	97.95	94.22	98.40
Minimum Standard	98.00	98.00	98.00	98.00	98.00	98.00	98.00	98.00	98.00	98.00	98.00	98.00	98.00

Mileage Performance figures are based on four weeks data