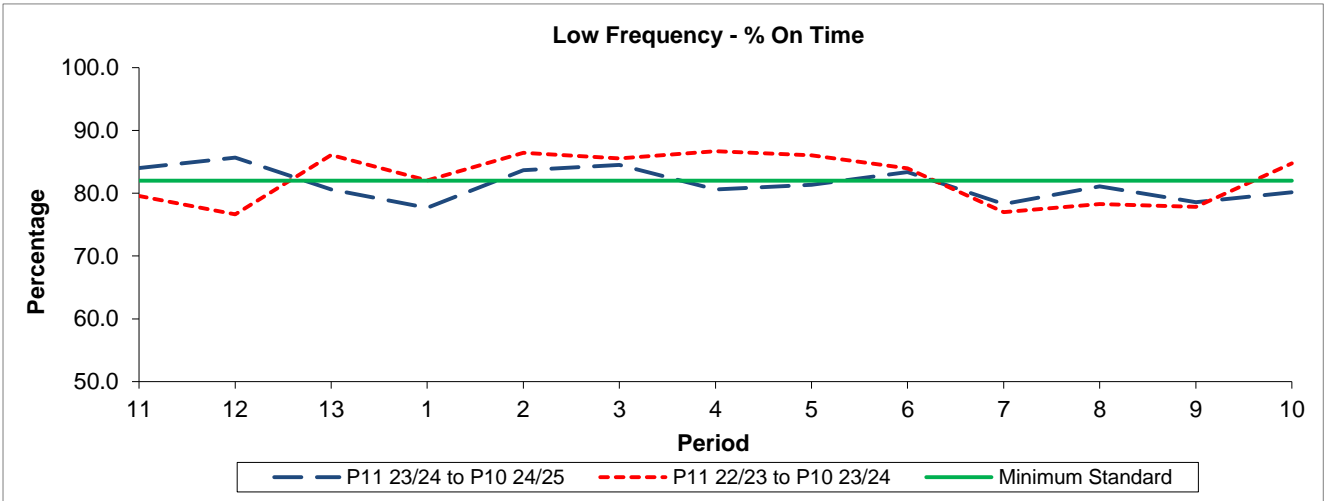


QSI & Mileage Performance Results

Route 178

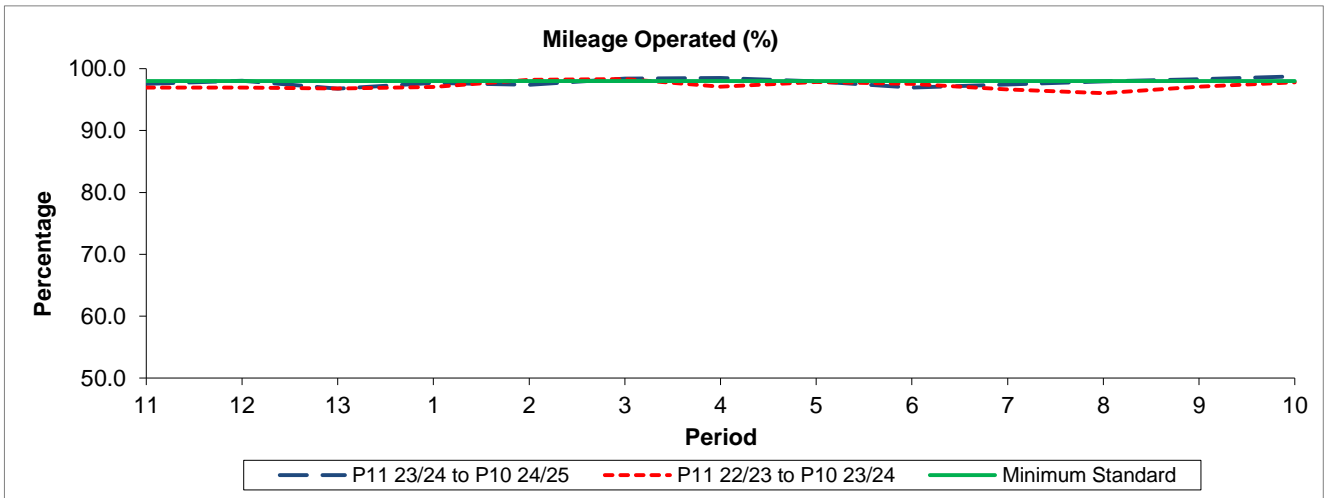
Reliability Performance



Period	11	12	13	1	2	3	4	5	6	7	8	9	10
P11 23/24 to P10 24/25	84.03	85.67	80.62	77.68	83.65	84.51	80.61	81.33	83.37	78.26	81.11	78.57	80.14
P11 22/23 to P10 23/24	79.56	76.64	86.11	82.03	86.45	85.57	86.69	86.04	83.95	76.97	78.25	77.82	84.77
Minimum Standard	82.00	82.00	82.00	82.00	82.00	82.00	82.00	82.00	82.00	82.00	82.00	82.00	82.00

% On Time performance figures are based on four weeks data

Mileage Performance



Period	11	12	13	1	2	3	4	5	6	7	8	9	10
P11 23/24 to P10 24/25	97.56	98.03	96.77	97.69	97.40	98.41	98.49	97.94	96.94	97.44	97.94	98.28	98.75
P11 22/23 to P10 23/24	96.93	96.93	96.78	97.05	98.18	98.32	97.11	97.85	97.54	96.62	96.04	97.11	97.78
Minimum Standard	98.00	98.00	98.00	98.00	98.00	98.00	98.00	98.00	98.00	98.00	98.00	98.00	98.00

Mileage Performance figures are based on four weeks data