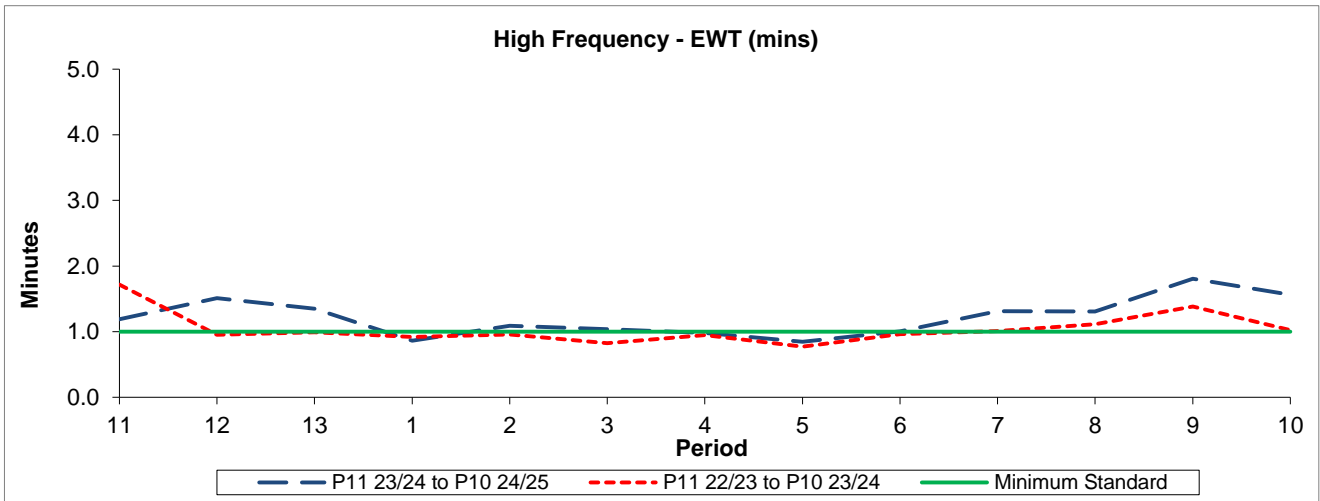


QSI & Mileage Performance Results

# Route 165

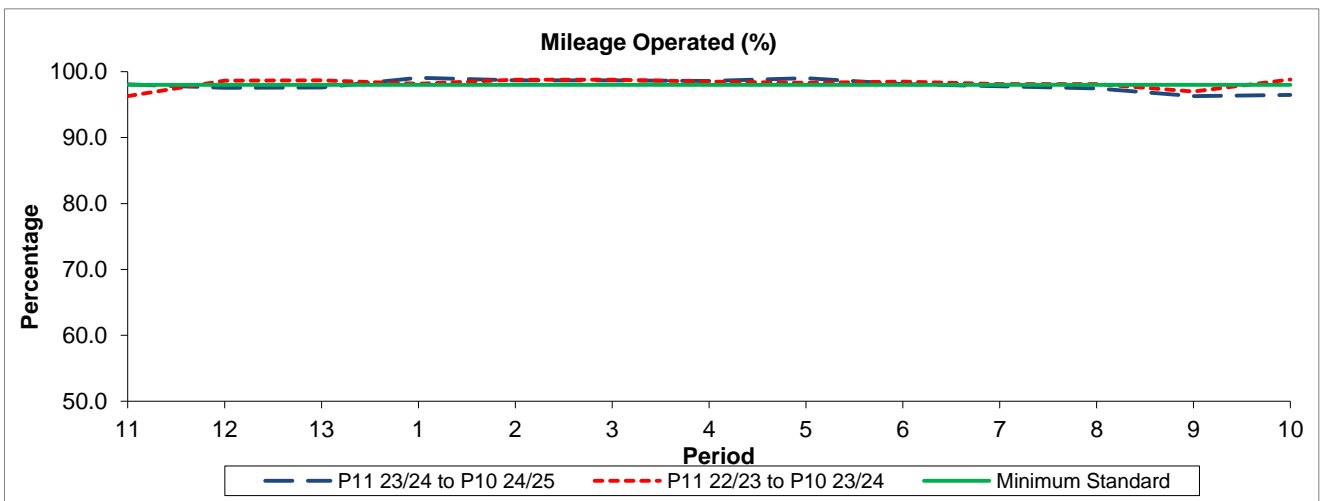
## Reliability Performance



Period	11	12	13	1	2	3	4	5	6	7	8	9	10
P11 23/24 to P10 24/25	1.19	1.51	1.35	0.86	1.09	1.04	0.98	0.85	1.01	1.31	1.31	1.81	1.56
P11 22/23 to P10 23/24	1.72	0.95	0.99	0.92	0.96	0.83	0.95	0.77	0.96	1.01	1.11	1.38	1.02
Minimum Standard	1.00	1.00	1.00	1.00	1.00	1.00	1.00	1.00	1.00	1.00	1.00	1.00	1.00

The EWT (mins) figures are based on four weeks data

## Mileage Performance



Period	11	12	13	1	2	3	4	5	6	7	8	9	10
P11 23/24 to P10 24/25	98.09	97.55	97.59	99.07	98.67	98.68	98.57	99.01	98.12	97.79	97.47	96.29	96.46
P11 22/23 to P10 23/24	96.30	98.64	98.67	98.16	98.78	98.76	98.49	98.29	98.49	98.12	98.12	97.00	98.80
Minimum Standard	98.00	98.00	98.00	98.00	98.00	98.00	98.00	98.00	98.00	98.00	98.00	98.00	98.00

Mileage Performance figures are based on four weeks data