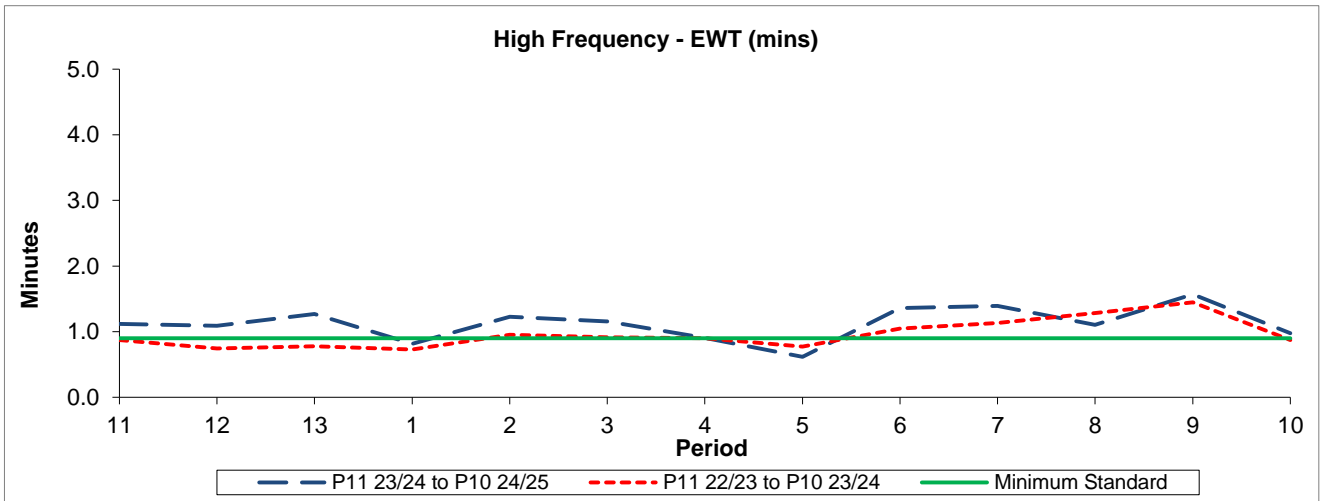


QSI & Mileage Performance Results

# Route 151

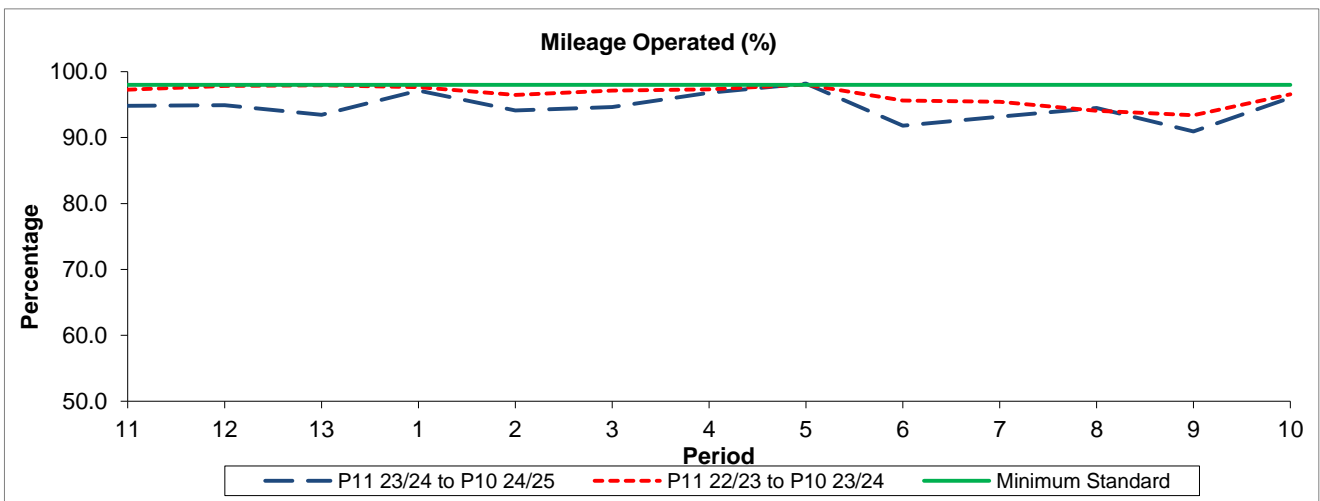
## Reliability Performance



Period	11	12	13	1	2	3	4	5	6	7	8	9	10
P11 23/24 to P10 24/25	1.12	1.09	1.27	0.81	1.23	1.16	0.90	0.62	1.36	1.39	1.10	1.57	0.98
P11 22/23 to P10 23/24	0.87	0.75	0.78	0.73	0.95	0.91	0.90	0.77	1.05	1.13	1.28	1.45	0.87
Minimum Standard	0.90	0.90	0.90	0.90	0.90	0.90	0.90	0.90	0.90	0.90	0.90	0.90	0.90

The EWT (mins) figures are based on four weeks data

## Mileage Performance



Period	11	12	13	1	2	3	4	5	6	7	8	9	10
P11 23/24 to P10 24/25	94.82	94.90	93.47	97.11	94.10	94.61	96.78	98.19	91.80	93.17	94.48	90.93	96.06
P11 22/23 to P10 23/24	97.28	97.82	97.95	97.66	96.48	97.15	97.29	98.04	95.62	95.41	94.06	93.39	96.57
Minimum Standard	98.00	98.00	98.00	98.00	98.00	98.00	98.00	98.00	98.00	98.00	98.00	98.00	98.00

Mileage Performance figures are based on four weeks data