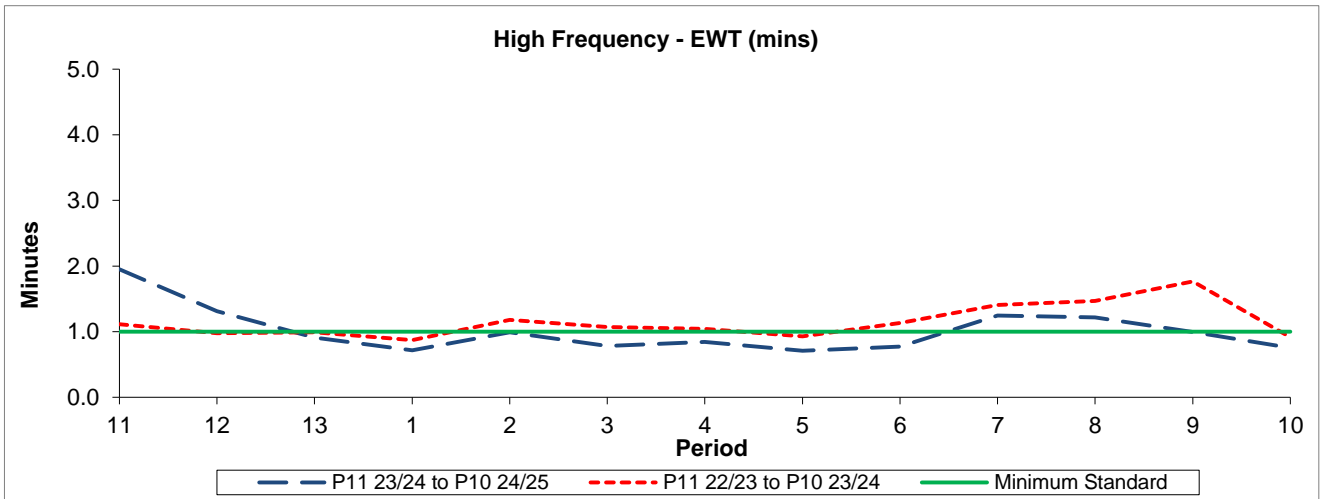


QSI & Mileage Performance Results

# Route 147

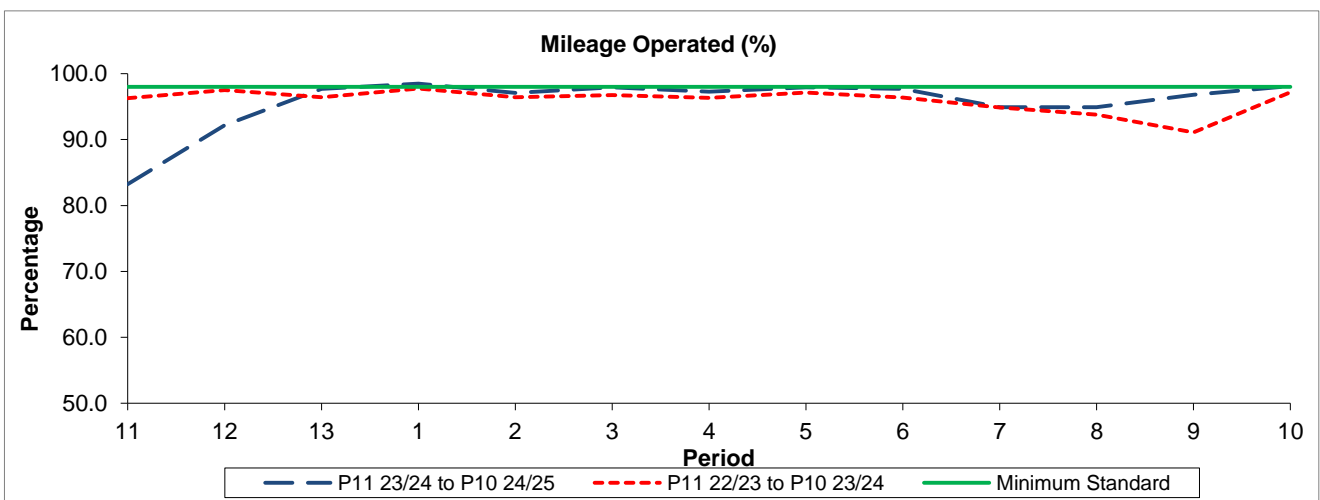
## Reliability Performance



Period	11	12	13	1	2	3	4	5	6	7	8	9	10
P11 23/24 to P10 24/25	1.95	1.31	0.91	0.72	0.99	0.78	0.84	0.71	0.77	1.25	1.22	1.00	0.76
P11 22/23 to P10 23/24	1.11	0.97	0.99	0.87	1.18	1.07	1.04	0.93	1.13	1.41	1.47	1.77	0.92
Minimum Standard	1.00	1.00	1.00	1.00	1.00	1.00	1.00	1.00	1.00	1.00	1.00	1.00	1.00

The EWT (mins) figures are based on four weeks data

## Mileage Performance



Period	11	12	13	1	2	3	4	5	6	7	8	9	10
P11 23/24 to P10 24/25	83.23	92.20	97.68	98.49	97.08	97.93	97.29	97.95	97.71	94.90	94.93	96.80	98.12
P11 22/23 to P10 23/24	96.28	97.52	96.41	97.74	96.43	96.76	96.33	97.15	96.36	94.86	93.79	91.09	97.17
Minimum Standard	98.00	98.00	98.00	98.00	98.00	98.00	98.00	98.00	98.00	98.00	98.00	98.00	98.00

Mileage Performance figures are based on four weeks data