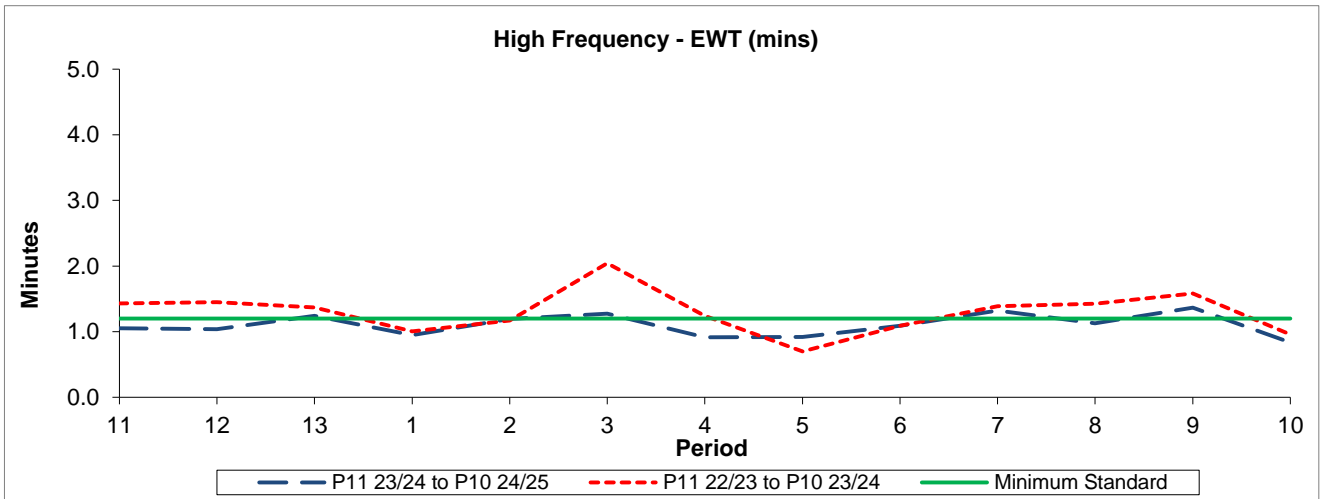


QSI & Mileage Performance Results

# Route 140

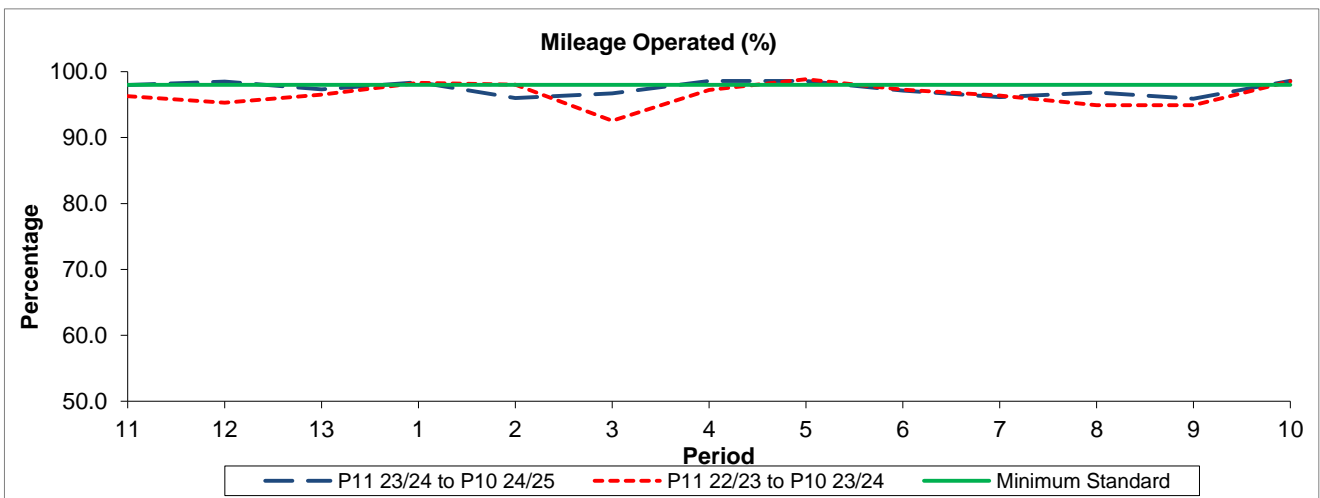
## Reliability Performance



| Period                 | 11   | 12   | 13   | 1    | 2    | 3    | 4    | 5    | 6    | 7    | 8    | 9    | 10   |
|------------------------|------|------|------|------|------|------|------|------|------|------|------|------|------|
| P11 23/24 to P10 24/25 | 1.05 | 1.04 | 1.24 | 0.95 | 1.19 | 1.27 | 0.92 | 0.92 | 1.09 | 1.32 | 1.13 | 1.37 | 0.84 |
| P11 22/23 to P10 23/24 | 1.43 | 1.45 | 1.37 | 1.00 | 1.17 | 2.04 | 1.24 | 0.70 | 1.09 | 1.39 | 1.43 | 1.58 | 0.96 |
| Minimum Standard       | 1.20 | 1.20 | 1.20 | 1.20 | 1.20 | 1.20 | 1.20 | 1.20 | 1.20 | 1.20 | 1.20 | 1.20 | 1.20 |

The EWT (mins) figures are based on four weeks data

## Mileage Performance



| Period                 | 11    | 12    | 13    | 1     | 2     | 3     | 4     | 5     | 6     | 7     | 8     | 9     | 10    |
|------------------------|-------|-------|-------|-------|-------|-------|-------|-------|-------|-------|-------|-------|-------|
| P11 23/24 to P10 24/25 | 97.98 | 98.49 | 97.32 | 98.42 | 95.99 | 96.69 | 98.59 | 98.58 | 97.12 | 96.15 | 96.83 | 95.89 | 98.62 |
| P11 22/23 to P10 23/24 | 96.26 | 95.31 | 96.50 | 98.30 | 98.01 | 92.55 | 97.23 | 98.85 | 97.28 | 96.36 | 94.89 | 94.90 | 98.52 |
| Minimum Standard       | 98.00 | 98.00 | 98.00 | 98.00 | 98.00 | 98.00 | 98.00 | 98.00 | 98.00 | 98.00 | 98.00 | 98.00 | 98.00 |

Mileage Performance figures are based on four weeks data