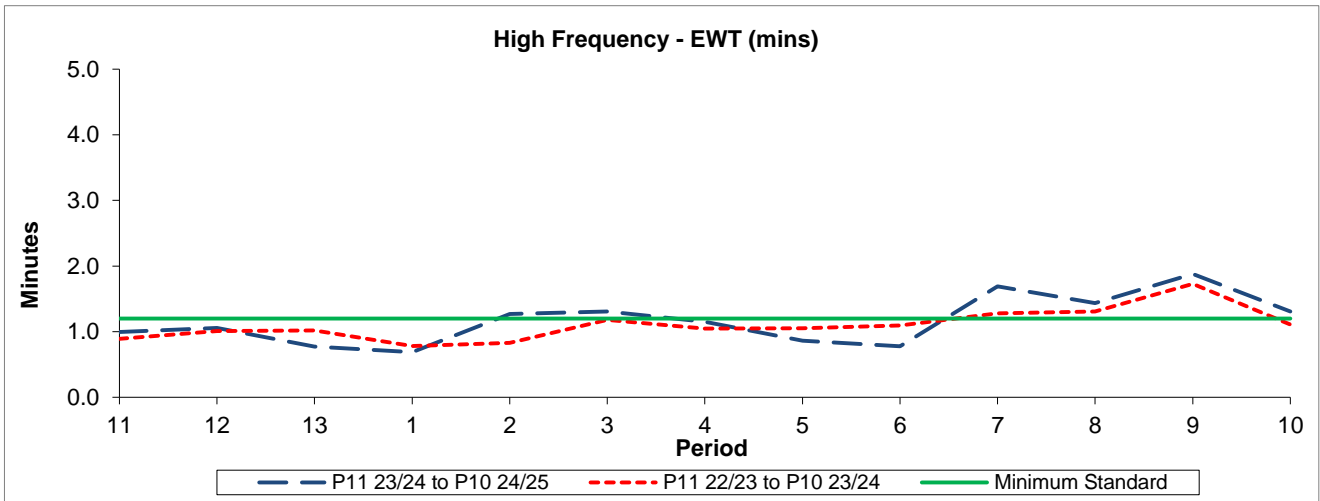


QSI & Mileage Performance Results

Route 14

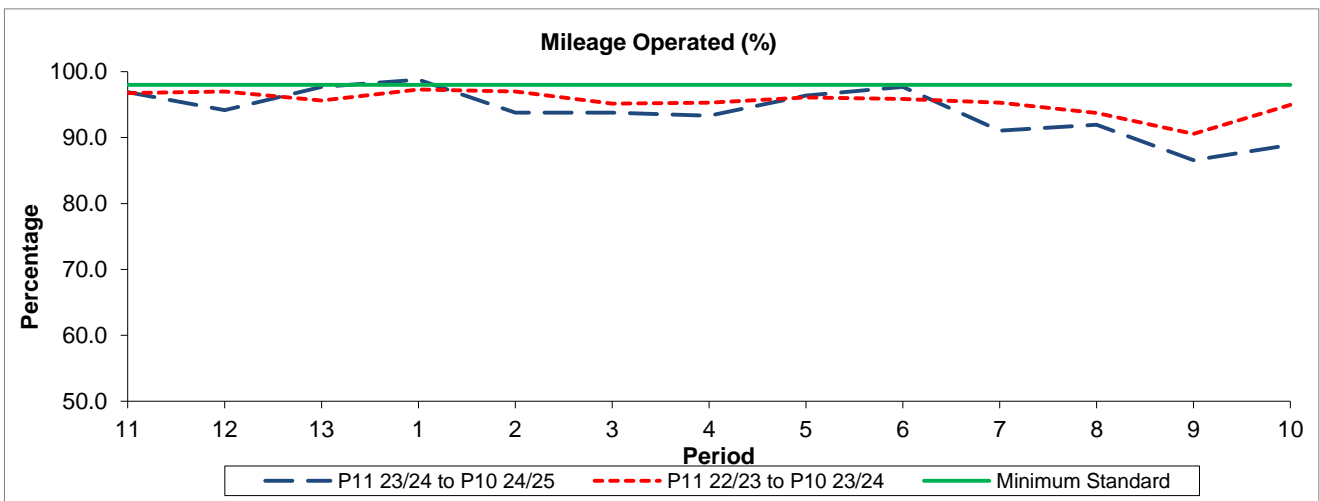
Reliability Performance



| Period | 11 | 12 | 13 | 1 | 2 | 3 | 4 | 5 | 6 | 7 | 8 | 9 | 10 |
|------------------------|------|------|------|------|------|------|------|------|------|------|------|------|------|
| P11 23/24 to P10 24/25 | 1.00 | 1.06 | 0.77 | 0.69 | 1.27 | 1.31 | 1.15 | 0.86 | 0.78 | 1.69 | 1.44 | 1.88 | 1.31 |
| P11 22/23 to P10 23/24 | 0.89 | 1.01 | 1.02 | 0.78 | 0.83 | 1.18 | 1.05 | 1.05 | 1.10 | 1.28 | 1.31 | 1.73 | 1.11 |
| Minimum Standard | 1.20 | 1.20 | 1.20 | 1.20 | 1.20 | 1.20 | 1.20 | 1.20 | 1.20 | 1.20 | 1.20 | 1.20 | 1.20 |

The EWT (mins) figures are based on four weeks data

Mileage Performance



| Period | 11 | 12 | 13 | 1 | 2 | 3 | 4 | 5 | 6 | 7 | 8 | 9 | 10 |
|------------------------|-------|-------|-------|-------|-------|-------|-------|-------|-------|-------|-------|-------|-------|
| P11 23/24 to P10 24/25 | 96.91 | 94.18 | 97.69 | 98.78 | 93.79 | 93.78 | 93.31 | 96.36 | 97.67 | 91.05 | 91.93 | 86.57 | 88.89 |
| P11 22/23 to P10 23/24 | 96.74 | 96.98 | 95.63 | 97.29 | 96.97 | 95.15 | 95.31 | 96.08 | 95.86 | 95.28 | 93.74 | 90.56 | 94.97 |
| Minimum Standard | 98.00 | 98.00 | 98.00 | 98.00 | 98.00 | 98.00 | 98.00 | 98.00 | 98.00 | 98.00 | 98.00 | 98.00 | 98.00 |

Mileage Performance figures are based on four weeks data