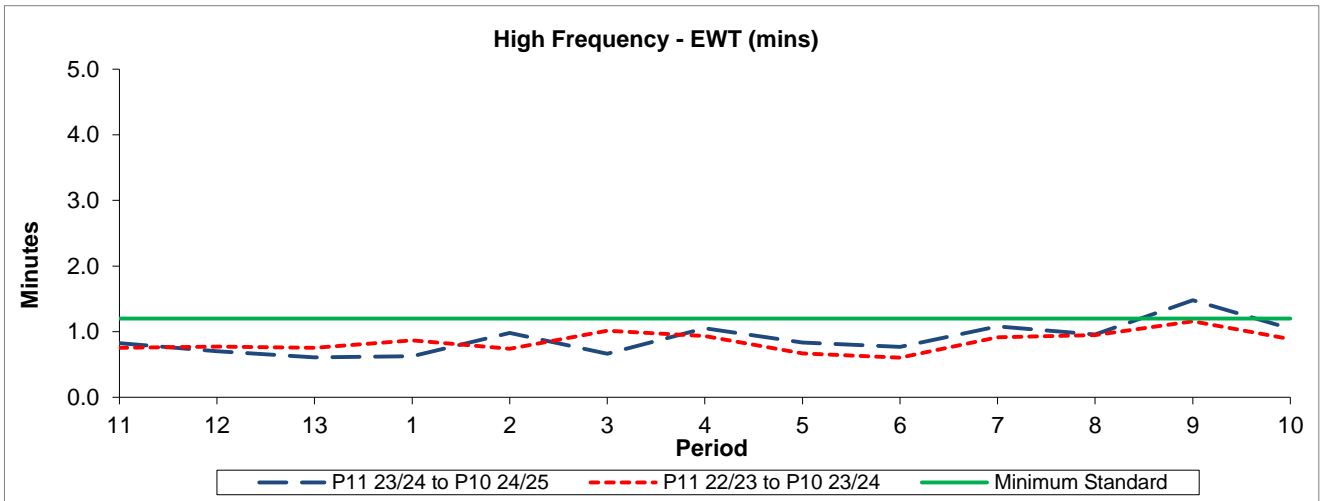


QSI & Mileage Performance Results

Route 12

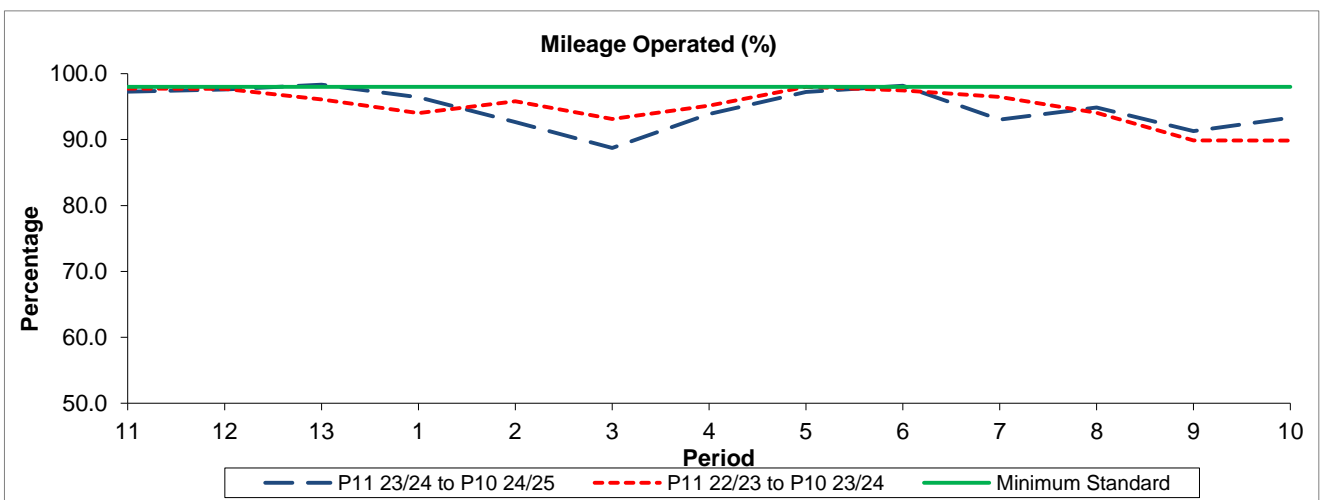
Reliability Performance



| Period | 11 | 12 | 13 | 1 | 2 | 3 | 4 | 5 | 6 | 7 | 8 | 9 | 10 |
|------------------------|------|------|------|------|------|------|------|------|------|------|------|------|------|
| P11 23/24 to P10 24/25 | 0.82 | 0.70 | 0.61 | 0.62 | 0.98 | 0.67 | 1.05 | 0.83 | 0.77 | 1.08 | 0.96 | 1.48 | 1.05 |
| P11 22/23 to P10 23/24 | 0.75 | 0.77 | 0.75 | 0.87 | 0.74 | 1.01 | 0.94 | 0.67 | 0.60 | 0.92 | 0.95 | 1.16 | 0.89 |
| Minimum Standard | 1.20 | 1.20 | 1.20 | 1.20 | 1.20 | 1.20 | 1.20 | 1.20 | 1.20 | 1.20 | 1.20 | 1.20 | 1.20 |

The EWT (mins) figures are based on four weeks data

Mileage Performance



| Period | 11 | 12 | 13 | 1 | 2 | 3 | 4 | 5 | 6 | 7 | 8 | 9 | 10 |
|------------------------|-------|-------|-------|-------|-------|-------|-------|-------|-------|-------|-------|-------|-------|
| P11 23/24 to P10 24/25 | 97.26 | 97.61 | 98.33 | 96.43 | 92.63 | 88.73 | 93.86 | 97.24 | 98.17 | 93.04 | 94.88 | 91.28 | 93.33 |
| P11 22/23 to P10 23/24 | 97.72 | 97.69 | 96.10 | 94.01 | 95.80 | 93.11 | 95.16 | 98.00 | 97.44 | 96.46 | 94.07 | 89.88 | 89.85 |
| Minimum Standard | 98.00 | 98.00 | 98.00 | 98.00 | 98.00 | 98.00 | 98.00 | 98.00 | 98.00 | 98.00 | 98.00 | 98.00 | 98.00 |

Mileage Performance figures are based on four weeks data